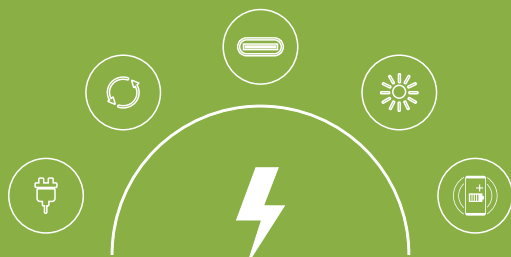


2019 SPRING

POWER Products

Smart Chargers, Qi & Powerbanks



NEW THINKING, NEW SOLUTION!



www.power7tech.com

– COMPANY PROFILE

Power 7 technology designs and manufactures complex external and wireless storage, mobile power devices, and peripheral solutions for various computer and mobile IOS platforms. We are recognized worldwide for our excellence in technology, creativity, innovation in design, quality and services we offer our experience of 20 years in OEM/ODM and Electronics manufacturing Services (EMS) has solid track records. We maintain long-standing relationships with numerous world-class and local companies that are not only depending on our expertise and services but also value us as their partners!

– COMPANY VISION

To design, manufacture and deliver quality products & solution to our customer fast and Superior to our competitors.

To become partner of choice by ongoing quest for excellence.

To accept projects that are within our capabilities and concentrate on the once we excel in.

– COMPANY PHILOSOPHY

Competitive Element

Heavy investment in research and development creates competitive advantages.

Three principals guide the engineering & production practices:

QUALITY, QUALITY and quality. This is our strongest competitive advantage!

Creative Element

We believe that knowledge, experience and imagination go hand in hand and stimulate creativity in developing feature product.

Accountability Element

We take pride in our diligence and we stand behind our products and services.

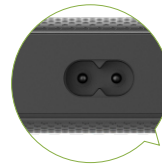


6-PORT DESKTOP CHARGER

6-PORT USB CHARGER

- 6 Port Support Charge to 6 Smartphone or Tablets

- Input: AC100-240V
- Output: USB-A1: 5V/2.4A
USB-A2: 5V/2.4A
USB-A3: 5V/2.4A
U SB-A4: 5V/2.4A
U SB-A5: QC 24W
USB-C: PD24W
USB-A5 and USB-C 5V/4A max shared
Total 60W Max output
- Built-in protection features for overheat, short-circuit and overcharge/discharge
- Auto On/ Off features for convenient usage and energy savings
- Housing: Plastic
- Dimension (mm): 103*75*27.2



Mini PD Fast Charger

Mini PD USB-C Wall Charger

- PD 18W/30W
- PD (Power Delivery) Function for Mobile Phones, Tablets & Notebooks

- Input: AC 100-240V, US plug
- Output: Spec 1 : USB-C PD18W
Spec 2 : USB-C PD30W
- Built-in protection features for overheat, short-circuit
- Support most devices with USB-C charging port
- Housing: Plastic
- Ultra-compact design
- Dimension (mm):39*39*24 (PD 18W)
54*44*24 (PD 30W)

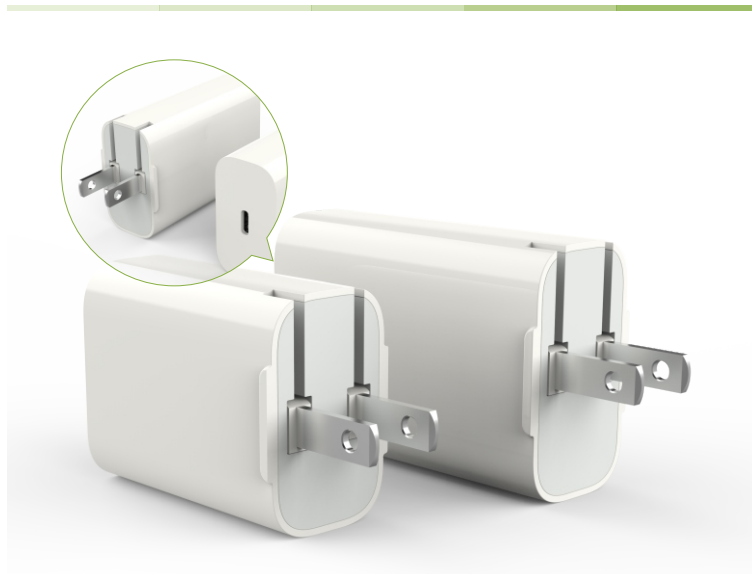


USB-C MINI PD FAST CHARGER

Mini PD (FP) USB-C Wall Charger

- PD 18W/30W
- Compact w Foldable Plug

- Input: AC 100-240V, US plug
- Output: Spec 1 : USB-C PD18W
Spec 2 : USB-C PD30W
- Built-in protection features for overheat, short-circuit
- Support most devices with USB-C charging port
- Housing: Plastic
- Ultra-compact design
- Dimension (mm): 50*39*26 (PD 18W)
65*44*26 (PD 30W)



SLIM PD FAST CHARGER

Slim PD Wall Charger

- PD 45W
- Slim & Lightweight!!
- Built with the tiny, super-efficient Navitas 'GaNFast' power chip

- Input: AC 100-240V, US plug
- Output: USB-C PD45W
- GaN technology design
- Built-in protection features for overheat, short-circuit
- Support most devices with USB-C charging port
- Housing: Plastic
- Ultra-Slim design.
- Dimension (mm):67*58*26



USB-C PD FAST CHARGER

2-PORTS WALL CHARGER

- PD 45W
- PD (Power Delivery) Function for Mobile Phones, Tablets & Notebooks

- Input: AC 100-240V, US plug
- Output: USB-C PD45W, USB-A 5/2.4A
Total 45W Max shared
- Built-in protection features for overheat, short-circuit
- Support most devices with USB charging port
- Ideal for long flights or anytime your devices might run out of power
- Housing: Plastic
- Accessory: Interchangeable EU, UK, AUS Prong as an Option, 1M Micro USB Cable
- Housing: Plastic
- Dimension (mm):65*65*30





3in1 FAST WIRELESS CHARGER TRISTAR

- Fast Charging
- Dual Wireless Charging Pads

- Input: 12V/3A DC Jack
- Output: Spec 1: Left/Right Pad: 5W, 7.5W, 10W
Middle Pad: 5W for AirPods
- Support charging three devices simultaneous
- Efficiency: 80% Max
- Safety: Foreign Object Detection & Thermal Shutdown Function
- Smart Feature: Smart LED Notification
- Wireless Charging Distance: 5 - 8mm
- Support Apple /Samsung Wireless
- Housing: Plastic
- Finished with a premium fabric wrap to provide a comfortable feel and added durability to the design
- Dimensions(mm): 252*122*13





WIRELESS CHARGER

Q TWIN-STAR

- 7.5W/10W/15W Fast Charging
- Dual Wireless Charging Pads

- Input: 12V/3A DC Jack
- Output: Spec 1: Left/Right Pad: 5W, 7.5W, 10W
Spec 2: Left/Right Pad: 5W, 7.5W, 10W, 15W
- Support charging two devices simultaneous
- Efficiency: 80% Max
- Safety: Foreign Object Detection & Thermal Shutdown Function
- Smart Feature: Smart LED Notification
- Wireless Charging Distance: 5 ~ 8mm
- Support Apple /Samsung Wireless
- Housing: Plastic
- Finished with a premium fabric wrap to provide a comfortable feel and added durability to the design
- Dimensions(mm): 196*110*13



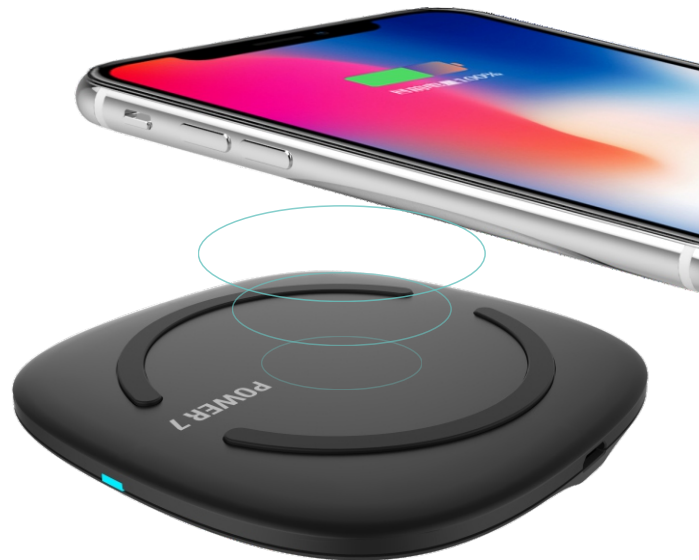


WIRELESS CHARGER

Q SQUARE SE

- Single Coil Pad Design, Low Cost Solution

- Input: Micro-B 5V/2A
- Outputs: Supports 5W
- Required Adapter: 5V/2A or higher spec
- Type: Wireless Charging Pad
- Standard: Single Coil WPC Qi v1.2
- Efficiency: 80% Max
- Safety: Foreign Object Detection & Thermal Shutdown Function
- Smart Feature: Smart LED Notification
- Wireless Charging Distance: 5 ~ 8mm
- Housing: Plastic
- Accessory: 200mm Micro USB Cable
- Dimensions(mm): 90*90*7





WIRELESS CHARGER

SLIM Q SQUARE SLIM Q ROUND

- Single Coil Quick Charge Design
- Low Cost Solution
- 7.5W/10W/15W Fast Charging

- Input: Spec 1: USB-A Fixed Cable 12V/1.5A Support 10W
Spec 2: USB-A Fixed Cable 12V/2A Support 15W
- Output: Spec 1: 5W, 7.5W, 10W
Spec 2: 5W, 7.5W, 10W, 15W
- Required Adapter: 5V/2A or higher spec
- Adapter QC 18W to support 10W or QC 24W to support 15W
- Efficiency: 80% Max
- Safety: Foreign Object Detection & Thermal Shutdown Function
- Smart Feature: Smart LED Notification
- Wireless Charging Distance: 5 ~ 8mm
- Support Apple /Samsung Wireless
- Housing: Plastic
- Accessory: Include 1M USB-A Fixed Cable or 1M Micro USB Cable
- Dimensions(mm): 96*96*6.5



Q-SQUARE

Q-ROUND





WIRELESS CHARGER

Q ROUND DENIM

- Single Coil Pad Aluminum Design
- 7.5W/10W/15W Fast Charging

- Input: DC Jack, Spec 1: 12V/1.5A to support 10W
Spec 2: 12V/2A to support 15W
- Output: Spec 1: 5W, 7.5W, 10W
Spec 2: 5W, 7.5W, 10W, 15W
- Efficiency: 80% Max
- Safety: Foreign Object Detection & Thermal Shutdown Function
- Smart Feature: Smart LED Notification
- Wireless Charging Distance: 5 ~ 8mm
- Accessory: Adapter 12V/1.5A or Adapter 12V/2A,
- Finished with a premium fabric wrap to provide a comfortable feel
- Support Apple /Samsung Wireless
- Housing: Aluminum
- Dimensions(mm): 98*16





WIRELESS CHARGER

Q ROUND

- Single Coil Pad Design
- 7.5W/10W/15W Fast Charging

- Input: DC Jack, Spec 1: 12V/1.5A to support 10W
Spec 2: 12V/2A to support 15W
- Output: Spec 1: 5W, 7.5W, 10W
Spec 2: 5W, 7.5W, 10W, 15W
- Efficiency: 80% Max
- Safety: Foreign Object Detection & Thermal Shutdown Function
- Smart Feature: Smart LED Notification
- Wireless Charging Distance: 5 - 8mm
- Accessory: Adapter 12V/1.5A or Adapter 12V/2A,
- Support Apple /Samsung Wireless
- Housing: Plastic
- Dimensions(mm): 98*16



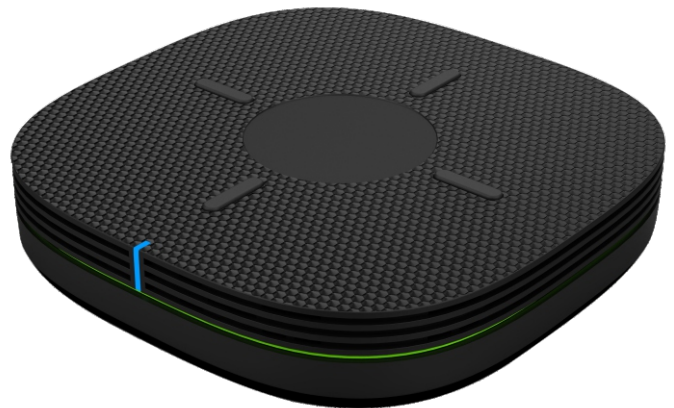


WIRELESS CHARGER

Q SQUARE ZEN

- Single Coil Pad Stand Design
- 7.5W/10W/15W Fast Charging

- Input: DC Jack, Spec 1: 12V/1.5A to support 10W
Spec 2: 12V/2A to support 15W
- Output: Spec 1: 5W, 7.5W, 10W
Spec 2: 5W, 7.5W, 10W, 15W
- Efficiency: 80% Max
- Safety: Foreign Object Detection & Thermal Shutdown Function
- Smart Feature: Smart LED Notification
- Wireless Charging Distance: 5 - 8mm
- Accessory: Adapter 12V/1.5A or Adapter 12V/2A,
- Support Apple /Samsung Wireless
- Housing: Plastic
- Dimensions(mm): 98*16





WIRELESS CHARGER

BETA

- 2-Coils Stand Design
- 7.5W/10W Fast Charging

- Input: Micro-B 9V/2A
- Outputs: 5W, 7.5W, 10W
- Efficiency: 80% Max
- Safety: Foreign Object Detection & Thermal Shutdown Function
- Smart Feature: Smart LED Notification
- Wireless Charging Distance: 5 ~ 8mm
- Support Apple /Samsung Wireless
- Housing: Plastic
- Accessory: 1M Micro USB Cable
- Dimensions(mm): 110*90*90





POWER BANK

OMEGA 100

- Powerbank With Wireless Charger
- 7.5W/10W Fast Charging

- Capacity: 10000mAh (SJY-65*95*110-10000*1)
- Input: Micro-B 5V/2A or 9V/2A
- Outputs: USB-A 5V/2.4A
- 4 LEDs for PowerBank & 1 LED for Wireless Charging Functions
- Built-in protection features for overheat, short-circuit and overcharge/discharge
- Adaptive Charging Output for maximum compatibility
- Auto On/Off features for convenient usage and energy saving
- Single-coil wireless charging design
- Efficiency: 80% Max
- Safety: Foreign Object Detection & Thermal Shutdown Function
- Wireless Charging Distance: 5 - 8mm
- Support Apple /Samsung Wireless
- Housing: Plastic
- Accessory: 200mm Micro USB Cable
- Dimensions(mm): 156*65*18





POWER BANK

SIGMA 100

- Powerbank With Wireless Charger
- 7.5W/10W Fast Charging

- Capacity: 10000mAh (SJY-65*95*110-10000*1)
- Input: Micro-B 5V/2A or 9V/2A
- Outputs: USB-A 5V/2.4A
- 4 LEDs for PowerBank & 1 LED for Wireless Charging Functions
- Built-in protection features for overheat, short-circuit and overcharge/discharge
- Adaptive Charging Output for maximum compatibility
- Auto On/Off features for convenient usage and energy saving
- Single-coil wireless charging design
- Efficiency: 80% Max
- Safety: Foreign Object Detection & Thermal Shutdown Function
- Wireless Charging Distance: 5 - 8mm
- Support Apple /Samsung Wireless
- Housing: Plastic
- Accessory: 200mm Micro USB Cable
- Dimensions(mm): 156*65*18



POLYMER POWER BANK

GENTLE 50/100

- Built-in Lightning Cable

GENTLE 50

- Capacity: 5000mAh (GPC-626090-5000mAh*1)
- Input: Micro-B 5V/2A
- Output: USB-A 5V/2.4A
Lightning Cable 5V/2.4A
Total 5V/2.4A max shared

GENTLE 100

- Capacity: 10000mAh (GPC-626090-5000mAh*2)
- Input: Micro-B 5V/2A
- Output: USB-A 5V/2.4A
Lightning Cable 5V/2.4A
Total 5V/3.4A max shared
- 4 LEDs for Battery Status with a multi-function button
- Built-in protection features for overheat, short-circuit and overcharge/discharge
- Auto On/Off features for convenient usage and energy savings
- Housing: Plastic
- Accessory: 200mm Micro USB Cable
- Dimension (mm): 146*70*10.6 (GENTLE 50)
147*72*17 (GENTLE 100)





POLYMER/18650 POWER BANK

iFREELY100

iDYNA100

- With lightning female connector(C37B)

iFreely100

- Capacity: 10000mAh (GPC-5000 mAh*2)
- Input: lightning female connector(C37B), 5V/2A
- Output: USB-A 5V/2.4A,
- 4 LEDs for battery status with a multi-function button
- Built-in protection features for overheat, short-circuit and overcharge/discharge
- Auto On/Off features for convenient usage and energy savings
- Housing: Plastic
- Dimension (mm):140*70*16

iDyna100

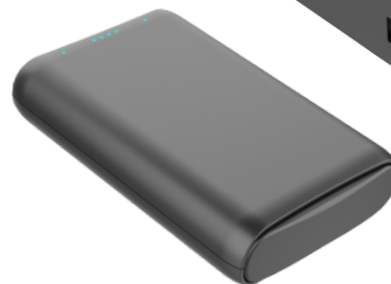
- Capacity:10050mAh (CM-3350 mAh*3)
- Input: lightning female connector(C37B), 5V/2A
- Output: USB-A 5V/2.4A,
- 4 LEDs for battery status with a multi-function button
- Built-in protection features for overheat, short-circuit and overcharge/discharge
- Auto On/Off features for convenient usage and energy savings
- Housing: Plastic
- Dimension (mm): 106*66.5*22



iFreely100



iDyna100





POLYMER POWER BANKS

FREELY100 SHIELD100

•Plastic

- Capacity: 10000mAh (GPC-5000 mAh*2)
- Input: Micro B 5V/2A,9V/2A(QC2.0) , USB C 5V/2A,9V/2A,PD3.0/PD2.0
- Output: USB-A 5V/3A,9V/2A,12V/1.5A ,USB C PD 18W
Total 5V/3.4A max shared
- 4 LEDs for Battery Status with a multi-function button
- Built-in protection features for overheat, short-circuit and overcharge/discharge
- Auto On/Off features for convenient usage and energy savings
- Housing: Plastic
- Accessory: 200mm Micro USB Cable
- Dimension (mm): 140*70*16



Freely100



Shield100





21700 POWER BANK

Cobble50 /100/150

•Plastic



Cobble50

- Capacity: 5000mAh (LS-21700-5000mAh*1)
- Input: Micro-B 5V/1A, 5V/2A
- Output: USB-A 5V/1A, 5V/2.4A

Cobble100

- Capacity: 10000mAh (LS-21700-5000mAh*2)
- Input: Micro-B 5V/1A, 5V/2A
- Output: USB-A 5V/1A, 5V/2.4A

Cobble150

- Capacity: 15000mAh (LS-21700-5000mAh*3)
- Input: Micro B QC18W PD18W (USB-C)
- Output: D18W (USB-C)
QC18W (USB-A)
Total 5V/3.4A max shared
- 4 LEDs for Battery Status with a multi-function button
- Built-in protection features for overheat, short-circuit and overcharge/discharge
- Auto On/Off features for convenient usage and energy savings
- Housing: Plastic
- Accessory: 200mm Micro USB Cable
- Dimension (mm): 101*29*25 Cobble50
101*50*25 Cobble100
110*71*25 Cobble150





18650 POWER BANK

RUGGED 104

- High Brightness LED Torch
- IP 65 Dustproof & Water Resistant

- Capacity: 10400mAh (BTW-18650-2600*4)
- Input: Micro-B 5V/2A
- Outputs: USB-A1: 5V/2.4A/USB-A2:5V/2.4A/
USB-A1/A2 shared 3.4A
- 4 LEDs for Battery Status with a multi-function button
- Built-in protection features for overheat, short-circuit and overcharge/discharge
- Auto On/Off features for convenient usage and energy savings
- Plastic, Rugged Design, Professional Flash Light, Ip65
- Housing: Plastic
- Accessory: 200mm Micro USB Cable
- Dimensions(mm): 109*83*25





20650 POWER BANK

PB201

• Aluminum

- Capacity: 20100mAh (ZN-20650-3350mAh x 6)
- Input: Micro-B QC 18W
- Outputs: USB-A1: QC 18W
USB-A2: 5V/2.4A Total Out Max 18W
- 4 LEDs for Battery Status with a multi-function button
- Built-in protection features for overheat, short-circuit and overcharge/discharge
- Auto On/Off features for convenient usage and energy savings
- Housing: Aluminum
- Accessory: 200mm Micro USB Cable
- Dimensions(mm): 175*68*24





18650 POWER BANK

PB201 PD

•Aluminum

- Capacity:20100mAh (CM-18650-3350mAh x 6)
- Input: USB-C PD 30W
- Outputs: USB-C: PD 30W 5V/3A Max
USB-A1: 5V/2.4A
USB-A2: 5V/2.4A Total Out Max 35W,USB-A1/A2 (Share3.4A)
- DIGI-Display for Battery Status with a Multifunction Button
- Built-in protection features for overheat, short-circuit and overcharge/discharge
- Auto On/Off features for convenient usage and energy savings
- Housing: Aluminum
- Accessory: 200mm Micro USB Cable
- Dimensions(mm): 178*62*22



18650 POWER BANK HEXAGON FAMILY

- High C/P Value

HEX26

- Capacity: 2600mAh (BTW-18650-2600*1)
- Input: 5V/1A micro-B
- Output: 5V/1A USB-A

HEX52

- Capacity: 5200mAh (BTW-18650-2600*2)
- Input: 5V/2A Micro-B
- Output: 5V/2.4A USB-A

HEX104

- Capacity: 10400mAh (BTW-18650-2600*4)
 - Input: 5V/2A Micro-B
 - Output: 5V/2.4A USB-A1 / 5V/2.4A USB-A2 / Total share: 3.4A
-
- Dimension (mm): 70*33*23 (HEX26)
93*43*23 (HEX52)
108*78*25 (HEX104)



18650 POWER BANK

JUICE 52/78

•Plastic

- Capacity: 5200mAh (BTW-18650-2600*2)
7800mAh (BTW-18650-2600*3)
- Input: 5V/2A micro-B
- Outputs: 5V/2.4A USB-A
- 4 LEDs for Battery Status with a multi-function button
- Built-in protection features for overheat, short-circuit and overcharge/discharge
- Auto On/Off features for convenient usage and energy savings
- Professional Flash Light
- Housing: Plastic
- Accessory: 200mm Micro USB Cable
- Dimensions(mm): 91*42*21 (2 Cell)
91*60.7*21 (3 Cell)



2Cell

3Cell



18650 POWER BANK DIAMOND FAMILY

•Plastic

DIA26

- Capacity: 2600mAh (BTW-18650-2600*1)
- Input: 5V/1A micro-B
- Output: 5V/1A USB-A

DIA52

- Capacity: 5200mAh (BTW-18650-2600*2)
- Input: 5V/2A Micro-B
- Output: 5V/2.4A USB-A

DIA78

- Capacity: 7800mAh (BTW-18650-2600*3)
- Input: 5V/2A Micro-B
- Output: 5V/2.4A USB-A1 / 5V/2.4A USB-A2 / Total share: 2.4A

DIA104

- Capacity: 10400mAh (BTW-18650-2600*4)
- Input: 5V/2A Micro-B
- Output: 5V/2.4A USB-A1 / 5V/2.4A USB-A2 / Total share: 3.4A
- Dimensions(mm): 72*25*34 (1 Cell)
91*25*64 (2 Cell)
91*25*81 (3 Cell)
91*25*98 (4 Cell)



20650 POWER BANKS

DYNA PD

- High C/P Value

Dyna134PD

- Capacity: 13400mAh (ZN-20650-3350*4)
- Input: Micro-B QC18W, USB-C PD18W
- Output: USB-C PD18W, USB-A QC18W
Total 18W max shared
- Dimension: 122*82*24.8

Dyna167PD

- Capacity: 16750mAh (ZN-20650-3350*5)
- Input: Micro-B QC18W, USB-C PD18W
- Output: USB-C PD18W, USB-A QC18W
Total 18W max shared
- Dimension: 140*82*24.8

Dyna201PD

- Capacity: 20100mAh (ZN-20650-3350*6)
- Input: Micro-B QC18W, USB-C PD18W
- Output: USB-C PD18W, USB-A1 QC18W
USB-A2 5V/2A
Total 18W max shared
- Dimension: 170*70*24.3



20650 POWER BANKS

DYNA FAMILY

- High C/P Value

Dyna33

- Capacity: 3350mAh (ZN-20650-3350*1)
- Input: Micro-B 5V/1A
- Output: USB-A 5V/1A

Dyna67

- Capacity: 6700mAh (ZN-20650-3350*2)
- Input: Micro-B 5V/2A
- Output: USB-A 5V/2.4A

Dyna105/134

- Capacity: 10500mAh/13400mAh (ZN-20650-3350*3/4)
- Input: Micro-B 5V/2A
- Output: USB-A1 5V/2.4A, USB-A2 5V/2.4A
Total 5V/2.4A max shared

Dyna167/201

- Capacity: 16750mAh/20100mAh (ZN-20650-3350*5/6)
- Input: Micro-B 5V/2A; USB-C 5V/3A
- Output: USB -A1 5V/2.4A,
USB-C 5V/3A
USB -A2 5V/2.4A (6 Cells)
Total shared: 5V/3.4A



18650 POWER BANKS

DYNA FAMILY

- High C/P Value

Dyna26

- Capacity: 2600mAh (BTW-18650-2600*1)
- Input: 5V/1A micro-B
- Output: 5V/1A USB-A

Dyna52

- Capacity: 5200mAh (BTW-18650-2600*2)
- Input: 5V/2A Micro-B
- Output: 5V/2.4A USB-A

Dyna78/104

- Capacity: 7800mAh/10400mAh (BTW-18650-2600*3/4)
- Input: 5V/2A Micro-B
- Output: 5V/2.4A USB-A1 / 5V/2.4A USB-A2
Total share: 2.4A(3 Cell)
Total share: 3.4A(4 Cell)

Dyna130

- Capacity: 13000mAh (BTW-18650-2600*5)
- Input: 5V/2A Micro-B/5V/3A USB-C
- Output: 5V/2.4A USB-A/5V/3A USB-C
Total shared: 5V/3.4A

Dyna156/208

- Capacity: 15600mAh/20800mAh(BTW-18650-2600*6/8)
- Input: 5V/2A Micro-B/5V/3A USB-C
- Output: 5V/2.4A USB-A1/5V/2.4A USB-A2 / 5V/3.4A USB-C/Total shared: 5V/3.4A





18650 POWER BANK

DIGITRON 52 POWER POCKET 52

•Plastic

- Capacity: 5200mAh (BTW-18650-2600*2)
- Input: 5V/2A Micro-B
- Output: 5V/2.4A USB-A
- DIGI-Display for Battery Status with a Multifunction Button
- Built-in protection features for overheat, short-circuit and overcharge/discharge
- Auto On/Off features for convenient usage and energy savings
- Housing: Plastic
- Accessory: 200mm Micro USB Cable
- Dimension (mm): 70*51*22(DIGITRON)
73.5*52*23.5(POWER POCKET BD)



DIGITRON 52

POWER POCKET 52



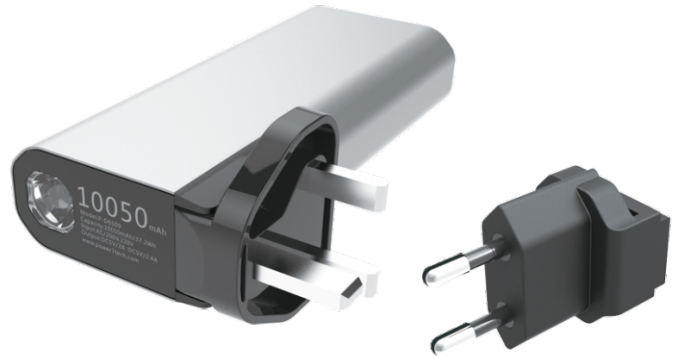


18650 POWER BANK TRAVELLER 100C

- Changeable AC Plug for EU/UK
- High Brightness LED Torch



- Capacity: 10050mAh (18650 CM-3350*3)
- Input: AC 100-240V; Micro-B: 5V/2A USB-C: 5V/3A
- Outputs: 5V/2.4A USB-C 5V/3A
Total Max 3.4A
- 4 LEDs for Battery Status with a multi-function button
- Built-in protection features for overheat, short-circuit and overcharge/discharge
- Auto On/Off features for convenient usage and energy savings
- Professional Flash Light
- Housing: Aluminum
- Accessory: Interchangeable EU, UK, AUS Prong as an Option, 200mm Micro USB Cable
- Dimensions(mm): 137*58*28

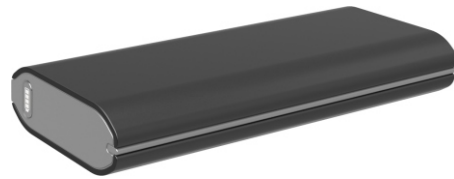




18650 POWER BANK SLING 104

•High Brightness LED Torch

- Capacity: 10400mAh (BTW-18650-2600*4)
- Input: 5V/2A Micro-B
- Outputs: Share 5V/3.4A. USB-A 5V/ 2.4A;
Lightning Cable: 5V/2.4A or
Micro USB Cable: 5V/2A
- 4 LEDs for Battery Status with a multi-function button
- Built-in protection features for overheat, short-circuit and overcharge/discharge
- Auto On/Off features for convenient usage and energy savings
- Professional Flash Light
- Housing: Plastic
- Accessory: 200mm Micro USB Cable
- Dimensions(mm): 141*60*22





AC OUTLET PORTABLE CHARGER

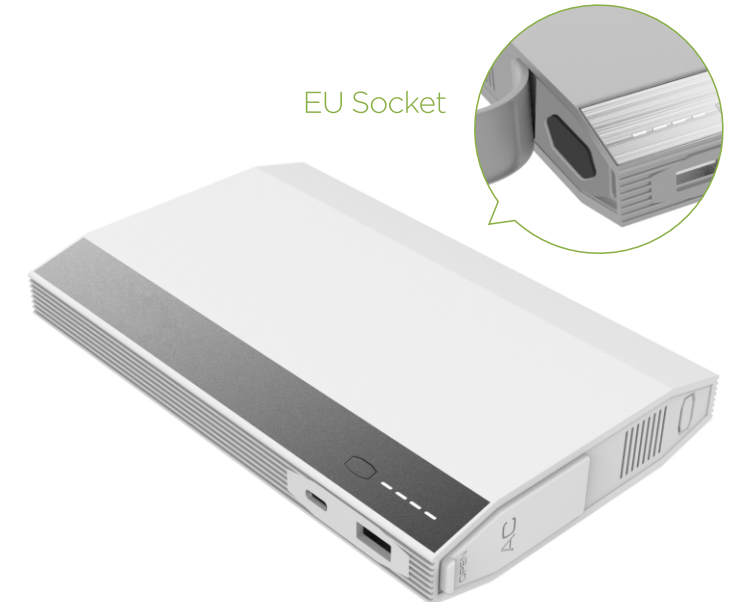
POWER BOOK 200

- PD (Power Delivery) Function for Mobile Phones, Tablets & Notebooks
- PD 30W
- AC INVERTER 100W

- Capacity: 20800mAh (ZN-18650-2600*8)
- Input: USB-C PD30W
- Output: Spec 1: AC110V, 100W (US Socket)
Spec 2: AC230V, 100W (EU Socket)
USB-C PD30W
USB-A 5V/2.4A
DC total 42W Max
- 4 LEDs for Battery Status with a multi-function button
- Built-in protection features for overheat, short-circuit and overcharge/discharge
- Auto On/Off features for convenient usage and energy savings
- Support most devices with USB charging ports
- Ideal for long flights or anytime your devices might run out of power
- Housing: Plastic,
- Accessory: 200mm Micro USB Cable
- Dimension (mm): 200*118*30



US Socket



EU Socket

CAR POWER INVERTER

POWER-CUP PD

- PD 60W
- Easy Fit Ergonomic Design
- AC INVERTER 100W

- Input: 12V/24V (Car Ligher Socket Cable)
- Output: Spec 1: AC 230V, 100W (EU Socket)
Spec 2: AC 110V, 100W (US Socket)
USB-C PD 60W/USB-A 5V/2.4A
DC Total 60W Max shared
- 4 LEDs for Battery Status with a multi-function button
- Built-in protection features for overheat, short-circuit and overcharge/discharge
- Auto On/Off features for convenient usage and enery savings
- Support most devices with USB charging ports
- Ideal for long flights or anytime your devices might run out of power
- Housing: Plastic
- Accessory: 1M Micro USB Cable
- Dimension (mm): ϕ 70*130



US Socket



EU Socket



AC OUTLET PORTABLE CHARGER

POWER CUP 200

• Easy Fit Ergonomic Design

- Capacity: 20100mAh (CM-18650-3350*6)
- Input: Micro-B 5V/2.4A/USB-C 5V/3A
- Output: AC110V, 65W (US Socket)
AC230V, 65W (EU Socket)
USB-C 5V/3A, USB-A1 5V/2.4A
USB-A2 5V/2.4A
DC total 30W Max
- 4 LEDs for Battery Status with a multi-function button
- Built-in protection features for overheat, short-circuit and overcharge/discharge
- Auto On/Off features for convenient usage and energy savings
- Housing: Aluminum
- Accessory: 1M Micro USB Cable
- Dimension (mm): 160*723*72



US Socket



EU Socket





AC OUTLET PORTABLE CHARGER

T-REX 208

- Easy Fit Ergonomic Design
- AC INVERTER 85W

- Capacity: 20800mAh (BTW-18650-2600*8)
- Input: Micro-B, QC18W
- Output: Spec 1: AC: 220V/50Hz, 85W rated Power(EU)
Spec 2: 110V/60Hz, 85W rated Power(US)
Spec 3: 110V/60Hz, 85W rated Power(3P US)
DC: USB-A1/A2: 5V/2.4A, Total 4.8A Max
- 4 LEDs for Battery Status with a Multifunction
- 1 LED for AC output indication
- Built-in protection features for overheat, short-circuit and overcharge/discharge
- Adaptive charging output for maximum compatibility
- Auto On/Off features for convenient usage and energy saving
- Housing: Plastic
- Accessory: 200mm Micro USB Cable
- Dimension(mm): 175*112*35





JAPAN TOKYO OFFICE

Toproom Shinagawa 10F, 1-9-7 Kitashinagawa, Shinagawa-ku, Tokyo
Tel: 03-6403-9098 ntsuru@powereight.co.jp



TAIWAN OFFICE

5F,-3, No,258 Liancheng Road,Zhonghe District, New Taipei City 235, Taiwan
Tel: 886.2.8227.1790 Fax: 886.2.8227.1026



CHINA SHENZHEN OFFICE

3-A1,Building A , Qingchuangcheng,Pinkexiao zhen,Zhangkeng community, Minzhi Town,Longhua District, Shenzhen, Guangdong Province,China
Tel: 86.755.8886.8949 Fax: 86.755.8179.8032



CHINA DONGGUAN FACTORY

No.28 Binjiang Blvd Shishuikou Village, Qiaotou Town, Dongguan an City.Guang Dong Province,China
Tel: 86.769.8929.7777 Fax: 86.769.8927.9777 sales@power7tech.com.cn



All trademarks or registered trademarks are property of their respective owners. Specifications are subject to change without notice. Product images may not look identical to actual products.