

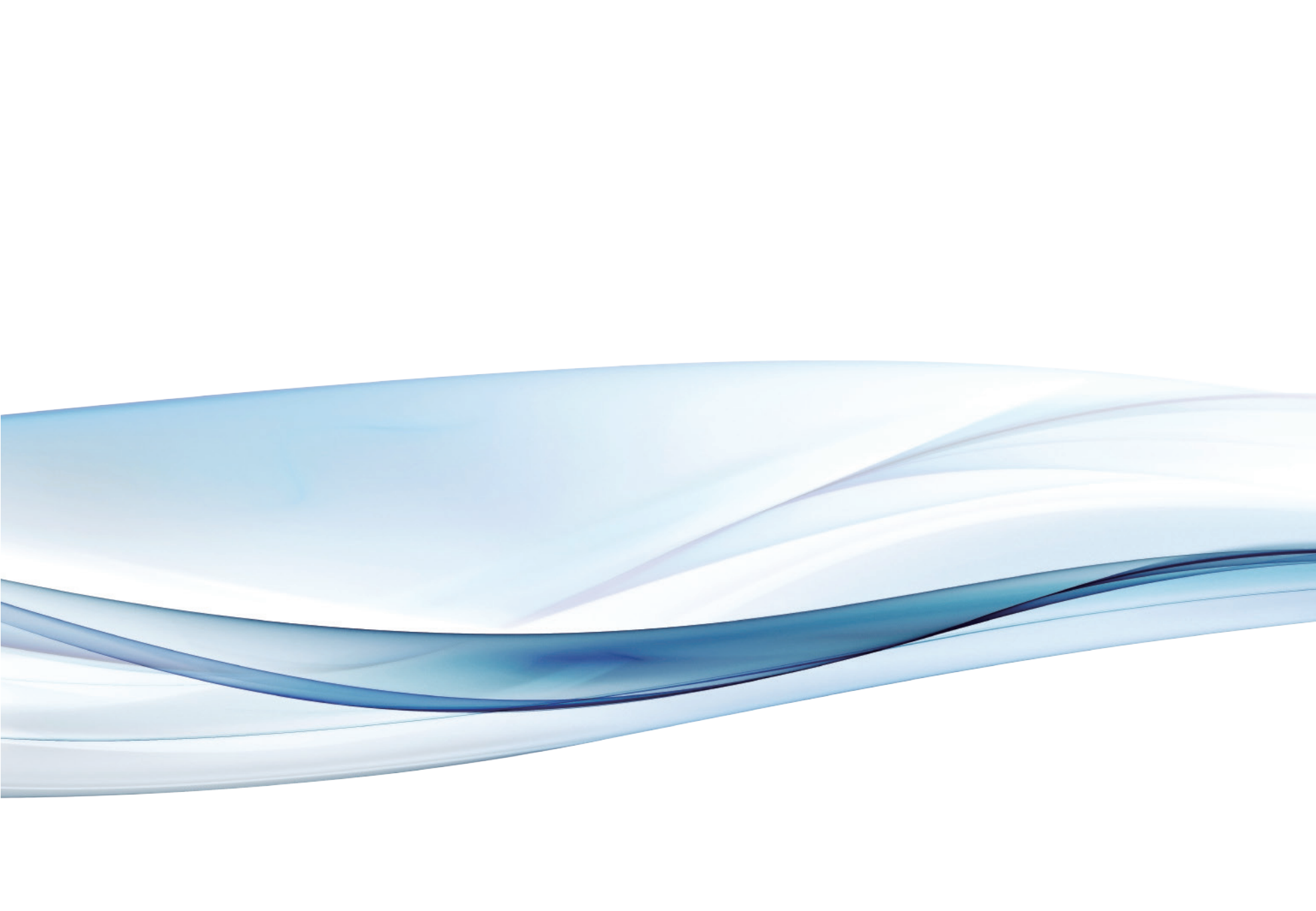


Your Personal Cloud Storage & Smart Powerbanks

2017 PRODUCT CATALOG **AUTUMN**



SMART HOME | WIRELESS STORAGE | SMART CHARGERS & AUDIOS | MFI & TYPE-C | ENCLOSURES





COMPANY PROFILE

Power 7 Technology designs and manufactures complex external and wireless storage , mobile power devices, and peripheral solutions for various computer and mobile OS platforms. We are recognized worldwide for our excellence in technology, creativity, innovation in design, quality and services we offer. Our experience of 20 years in OEM/ODM and Electronics Manufacturing Services (EMS) has solid track records. We maintain long-standing relationships with numerous world-class and local companies that are not only depending on our expertise and services but also value us as their partners!

COMPANY VISION

To design, manufacture and deliver quality products & solution to our customer fast and superior to our competitors.

To become partner of choice by ongoing quest for excellence.

To accept projects that are within our capabilities and concentrate on the once we excel in.

COMPANY PHILOSOPHY

Competitive Element

Heavy investment in Research and Development creates competitive advantages.

Three principals guide the engineering & production practices:

QUALITY, QUALITY and QUALITY. This is our strongest competitive advantage!

Creative Element

We believe that Knowledge, Experience and Imagination go hand in hand and stimulate creativity in developing feature product.

Accountability Element

We take pride in our diligence and we stand behind our products and services.

CONTENTS

ALEXA SMART HOME	01
SMART STORAGE PRODUCTS	03
WIRELESS STORAGE PRODUCTS	11
SMART POWER BANK	18
WIRELESS CHARGER PRODUCTS	31
USB-C ADAPTER	37
2.5" / 3.5" SSD/HDD ENCLOSURE PRODUCTS	43

ALEXA SMART HOME

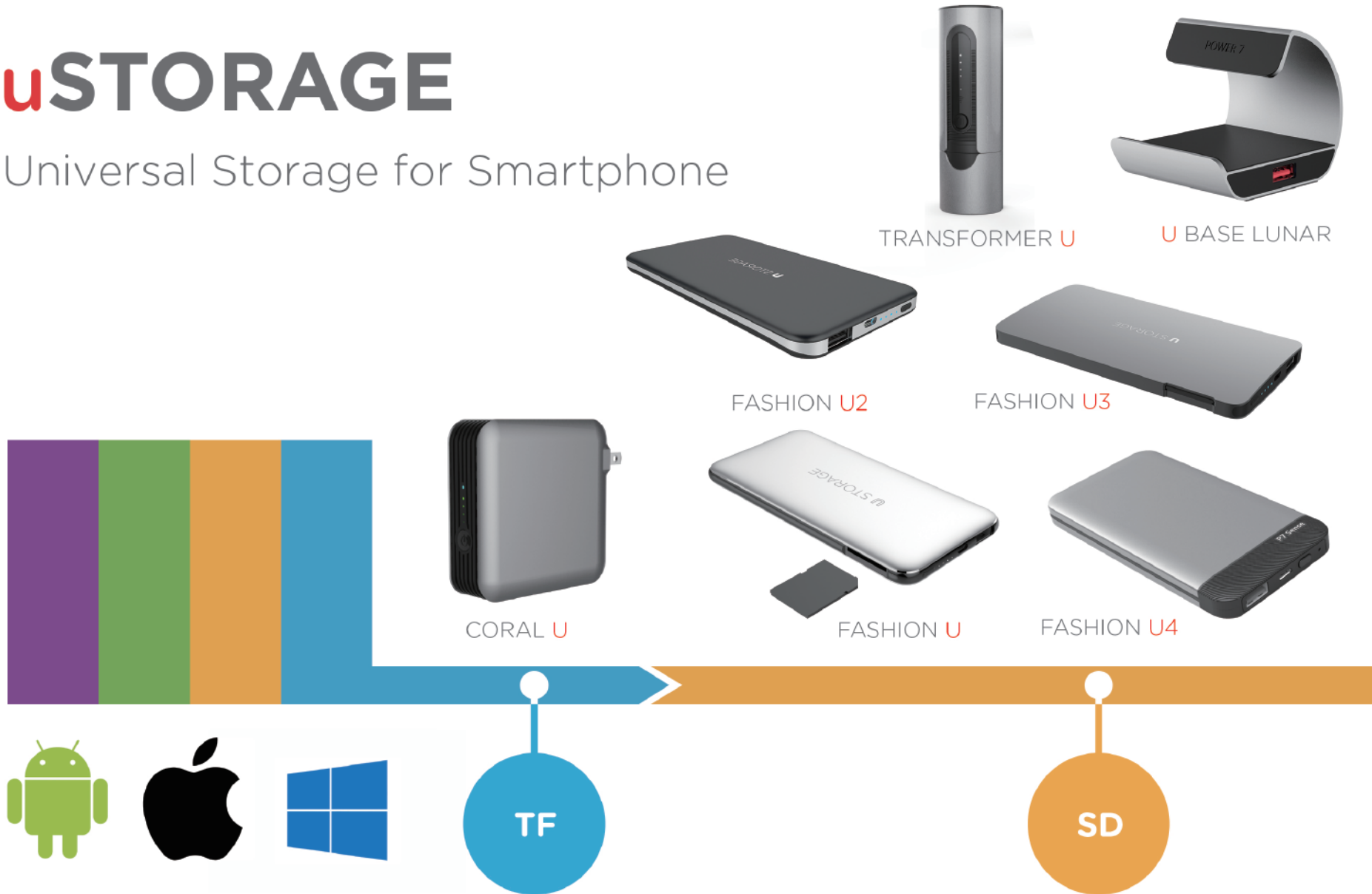
Always Ready, Wi-Fi Connected, Voice Control





uSTORAGE

Universal Storage for Smartphone





SLING U



U ADAPTER



STORM U



U DOCKING



U BASE ZERO

ONE FOR ALL



COMBI U



KIRIN



KIRIN 2



KIRIN 3

SSD

HDD



SMART STORAGE

Increase Storage on Your Smart Devices



YOYO BASE

Part#: P7-YOY

- Dimensions: 90mm(L)x90mm(W)x23.8mm(H)
- Supported image format: bmp,gif,jpg,tif,png.
- Supported common music/video format will vary depending on the installed app.
- Supported document format: doc,docx,ppt, pptx,xls,xlsx,key,numbers,pages,pdf,html,txt,rtf.
- Supports contact list backup and recovery
- Compatible with Apple iPhone and iPad , so you can instantly expand your device's storage capacity
- PC/ Mac computer compatibility: Windows Vista®, Windows 7, Windows 8, Mac OS X v10.6+
- Supports iPhone and iPad charging
- Built-in SD slot, supports SD, SDHC,SDXC
- Lightning output 5V/2.1A
- Micro USB 5V/3A input or PC data connection

Product specifications subject to change without notice. Product images may not look identical to the actual products.



SNAKE

Part#:P7-IS26-SNA-BK

- Dimensions: 163mm(L) X 20mm(W) x12mm(H)(SNAKE)
110mm(L) X 12.2mm(W) x8mm(H)(SNAKE II)
163mm(L) X 18mm(W) x10mm(H)(SNAKEIII)
- Interface: Lightning and USB 3.0 Connectors, using one connector at a time with iPhone, iPad, PC and Mac computers up to 2TB, so you never need to worry
- Free Up iPhone/iPad Memory about being out of memory
- Support FAT32 and ExFAT file systems
- Makes file transfer easy between an iPhone, iPad and computers, Lightning and USB Connectors make it a snap to move pictures and videos between devices
- Backup and recover your data



SNAKE II

Part#:P7-IS26-SNA-BK



SNAKE III

Part#:P7-IS26-SNA-BK

- Supported image format: bmp,gif,jpg,tif,png.
- Supported common music/video format will vary depending on the installed app.
- Supported document format: doc,docx,ppt, pptx,xls,xlsx,key,numbers,pages,pdf,html,txt,rtf.
- Supports contact list backup and recovery
- Compatible with Apple iPhone and iPad , so you can instantly expand your device's storage capacity
- PC/ Mac computer compatibility: Windows Vista®, Windows 7, Windows 8, Mac OS X v10.6+
- Supports iPhone and iPad charging



Made for
iPhone iPad



Made for
iPhone iPad



T2

Part# P7-T2

- Dimensions: 55mm(L)x12.5mm(W)x7.8mm(H) (T2)
55mm(L) X 12.5mm(W)x7.8mm(H) (V2)
- Interface: Lightning and USB 3.0 Connectors, using one connector at a time with iPhone, iPad, PC and Mac computers
- Support FAT32 and ExFAT file systems
- Makes file transfer easy between an iPhone, iPad and computers, Lightning and USB Connectors make it a snap to move pictures and videos between devices
- Supported image format: bmp,gif,jpg,tif,png



V2

Part#:P7-V2

- Supported common music/video format will vary depending on the installed app.
- Supported document type: doc,docx,ppt,pptx, xls,xlsx,key,numbers,pages,pdf,html,txt,rtf
- Supports contact list backup and recovery
- Compatible with Apple iPhone and iPad Including iPhone 5 and newer models and iPad Air, iPad with Retina, iPad mini and iPad mini 2 and newer models, so you can instantly expand your device's storage capacity
- PC/ Mac computer compatibility:
Windows Vista®, Windows 7, Windows 8, Windows 8.1, Mac OS v10.6+





L2

Part#:P7-L2

- Dimensions: 71mm(L)x12.2mm(W)x7mm(H) (L2)
58 mm(L) X 20mm(W)x13mm(H) (U2)
- Interface: Lightning and USB 3.0 Connectors, using one connector at a time with iPhone, iPad, PC and Mac computers
- Support FAT32 and ExFAT file systems
- Makes file transfer easy between an iPhone, iPad and computers, Lightning and USB Connectors make it a snap to move pictures and videos between devices
- Supported image format: bmp,gif,jpg,tif,png



U2

Part#:P7-U2

- Supported common music/video format will vary depending on the installed app
- Supported document type: doc,docx,ppt,pptx,xls,xlsx,key,numbers,pages,pdf,html,txt,rtf
- Supports contact list backup and recovery
- Compatible with Apple iPhone and iPad Including iPhone 5 and newer models and iPad Air, iPad with Retina, iPad mini and iPad mini 2 and newer models, so you can instantly expand your device's storage capacity
- PC/ Mac computer compatibility: Windows Vista®, Windows 7, Windows 8, Windows 8.1, Mac OS v10.6+





LADYBIRD

Part#: P7-LAD

- Dimensions: 85mm(L)x35.8mm(W)x32.6mm(H)
- Supported image format: bmp,gif,jpg,tif,png.
- Supported common music/video format will vary depending on the installed app.
- Supported document format: doc,docx,ppt, pptx,xls,xlsx,key,numbers,pages,pdf,html,txt,rtf.
- Supports contact list backup and recovery
- Compatible with Apple iPhone and iPad , so you can instantly expand your device's storage capacity
- PC/ Mac computer compatibility: Windows Vista®, Windows 7, Windows 8, Mac OS X v10.6+
- Supports iPhone and iPad charging
- Built-in SD slot, supports SD, SDHC,SDXC
- Lightning output 5V/2.1A

Made for
iPhone iPad



iDOCKING

Part#: P7-iDOC

- Dimensions: 89mm(L)x89mm(W)x40mm(H)
- Supported image format: bmp,gif,jpg,tif,png.
- Supported common music/video format will vary depending on the installed app.
- Supported document format: doc,docx,ppt, pptx,xls,xlsx,key,numbers,pages,pdf,html,txt,rtf.
- Supports contact list backup and recovery
- Compatible with Apple iPhone and iPad , so you can instantly expand your device's storage capacity
- PC/ Mac computer compatibility: Windows Vista®, Windows 7, Windows 8, Mac OS X v10.6+
- Supports iPhone and iPad charging
- Built-in SD slot, supports SD, SDHC,SDXC
- Lightning output 5V/2.1A



Product specifications subject to change without notice. Product images may not look identical to the actual products.

A group of four young adults, three women and one man, are gathered outdoors, smiling and looking at a tablet held by one of the women. The man on the right is wearing large headphones and a denim jacket. The woman on the far left is holding a smartphone. The background is a bright, sunny outdoor setting with a blurred red object in the distance.

Wireless streaming from storage media to
laptops and tablets, whenever, wherever!

WIRELESS STORAGE With Internet Access Capability

Works with Mac / Windows / Linux / Android and iOS devices



Support simultaneous connections for sharing videos, music, photos and documents



Built-in battery cells for maximum portability



Available Client and System Manager App



User-friendly interface and easy to operate. Power-on, key-in password to gain access.



CURIOSITY II_s

Part# CUR-WiFISD-S250UN

- Dimensions: 130mm (L) X 83.5mm (W) X 25mm (H)
- Streams media over wireless enabled devices up to 5 users simultaneously
- Supports various personal computer and mobile operating systems to access and stream music, videos, photos and documents
- 3000mAh battery, up to 5 hours of continuous battery life
- Available mobile client app with copy, delete, upload, and search function to locate and access files much faster
- Wireless or Wired (RJ45) internet pass-through connection, supporting 802.11 b/g/n speeds, up to 300Mbps and works as an Access Point
- Supports 2.5" SATA Hard Disk Drives. HDD spins down after 5 minutes of no data transfer or activity
- Built-in SD slot, supports SD, SDHC, SDXC, up to 2TB; supports One-touch Backup to HDD
- Built-in USB 3.0 port for super-speed data transfer and access
Backward compatible with USB 2.0
- Built-in USB-A port for charging USB powered devices for emergency use

STORM II_s

Part# STO-WiFISD-S250UN



SPARROW

Part# SPA-WiFi-USB

- Dimensions: 96mm X 44mm (W) X 28mm (H) (sparrow)
103mm (L) X 45.5mm (W) X 28mm (H) (parakeet)
- Stream media over wireless enabled devices up to 5 users simultaneously
- Supports various personal computer and mobile operating systems to access and stream music, videos, photos and documents
- 5200mAh 18650 battery cell built-in, up to 20 hours of continuous battery life
- Wireless or Wired (RJ45) internet pass-through connection, supporting 802.11 b/g/n speeds, up to 300Mbps and works as an Access Point
- Available mobile client app with copy, delete, upload, and search function to locate and access files much faster
- Built-in USB A port supporting USB Mass Storage for sharing contents and for charging USB Powered device for emergency use only

PARAKEET

Part# PAR-WiFi-USB

Battery life subject to normal usage conditions.

Product specifications subject to change without notice. Product images may not look identical to the actual products.



SEASONBOX

Part# ISE-WIFI-S25OUN-7620

- Dimension: 128mm x 80mm x 20mm
- Supports 2.5" SATA HDD up to 9.5mm
- Built-in USB 3.0 port for super-speed data transfer and access
- Home Router function with 1-Port WAN, supports PPPoE, Static/Dynamic IP Address
- 5V/2A USB DC input
- Wireless or Wired (RJ45) internet pass-through connection, supporting 802.11 b/g/n speeds, up to 300Mbps and works as an Access Point
- Supports Samba, WebDAV, DLNA Server and Airplay (iOS Only)
- Supports various personal computer and mobile operating systems to access and stream music, videos, photos and documents
- Available mobile client app with copy, delete and upload features



VICTOR II

Part# VIC-WiFi-S25OUN-7620

- Dimension: 127.7mm (L) X 80mm (W) X 25mm (H)
- Stream media over wireless enabled devices up to 5 users simultaneously
- Supports various personal computer and mobile operating systems to access and stream music, videos, photos and documents
- 3000mAh battery cell built-in, up to 5 hours of continuous battery life
- Available mobile client app with copy, delete, upload, and search function to locate and access files much faster
- Wireless or Wired (RJ45) internet pass-through connection, supporting 802.11 b/g/n speeds, up to 300Mbps and works as an Access Point
- Supports 2.5" SATA Hard Disk Drives. HDD spins down after 5 minutes of no data transfer or activity
- Built-in USB 3.0 port for super-speed data transfer and access. Backward compatible with USB 2.0

Battery life subject to normal usage conditions.

Product specifications subject to change without notice. Product images may not look identical to the actual products.



CORAL II

Part# PR700-WiFi-USB-AC

- Dimensions: 82mm (L) X 82mm (W) X 28mm (H)
- Stream media over wireless enabled devices up to 5 users simultaneously
- Supports various personal computer and mobile operating systems to access and stream music, videos, photos and documents
- 5200mAh 18650 battery cell built-in, upto 20 hours of battery life
- Wireless or Wired (RJ45) internet pass-through connection, supporting 802.11 b/g/n speeds, up to 300Mbps and works as an Access Point
- Available mobile client app with copy, delete, upload, and search function to locate and access files much faster
- Built-in AC Plug and microUSB port to charge the internal battery
- Built-in Two USB ports: supporting USB Mass Storage for sharing contents and for charging USB Powered device for emergency use only



AIRPOCKET

Part# AIR-WiFi-D11U

- Dimensions: 73mm (L) X 26mm (W) X 9.6mm (H);
- Stream media over wireless enabled devices up to 5 users simultaneously
- Supports various personal computer and mobile operating systems to access and stream music, videos, photos and documents
- Built-in microSD card reader to support microSD, microSDHC and microSDXC memory cards
- Wireless internet pass-through connection, supporting 802.11 b/g/n speeds and works as an Access Point
- Available mobile client app with copy, delete, upload, and search function to locate and access the files much faster
- Functions as a USB Card Reader or Wireless Card Reader

Battery life subject to normal usage conditions.

Product specifications subject to change without notice. Product images may not look identical to the actual products.



WHALE

Part# UHA-WiFi-S350UN

- Supports 3.5" SATA HDD up to 3TB capacity
- Stream media over wireless enabled devices up to 5 users simultaneously
- Supports various personal computer and mobile operating systems to access and stream music, videos, photos and documents
- Wireless or Wired (RJ45) internet pass-through connection, supporting 802.11 b/g/n speeds, up to 300Mbps and works as an Access Point
- Available mobile client app with copy, delete, upload, and search function to locate and access files much faster
- Supports Samba and WebDAV
- Built-in USB 3.0 port for super-speed data transfer and access. Backward compatible with USB 2.0
- DC input: 12V/2A



BISCUIT II

Part# BIS-WiFi-D24U-7620

- Dimensions: 98mm (L) X 72mm (W) X 16mm
- Stream media over wireless enabled devices up to 5 users simultaneously
- Supports various personal computer and mobile operating systems to access and stream music, videos, photos and documents
- 2600mAh battery cell built-in, up to 8 hours of continuous battery life
- Built-in SD card reader to support SD, SDHC, SDXC memory cards microSD and miniSD adapter required
- Wireless or Wired (RJ45) internet pass-through connection, supporting 802.11 b/g/n speeds, up to 300Mbps and works as an Access Point
- Available mobile client app with copy, delete, upload, and search function to locate and access files much faster
- Built-in USB A port to support External USB Mass Storage and charging USB power devices for emergency use
- Built-in micro USB for charging the internal battery and data sync function

Battery life subject to normal usage conditions.

Product specifications subject to change without notice. Product images may not look identical to the actual products.



CAMPER

Part# CAM-WiFi-USB

- Dimensions: 56mm (L) X 51mm (W) X 15mm (H)
- Stream media over wireless enabled devices up to 5 users simultaneously
- Supports various personal computer and mobile operating systems to access and stream music, videos, photos and documents
- Built-in USB A port to support USB Mass Storage for file sharing
- Wireless or Wired (RJ45) internet pass-through connection, supporting 802.11 b/g/n speeds and works as an Access Point
- Available mobile client app with copy, delete, upload, and search function to locate and access files much faster
- Built-in micro USB port for power input



SABLE

Part# SAB-WiFi-USB

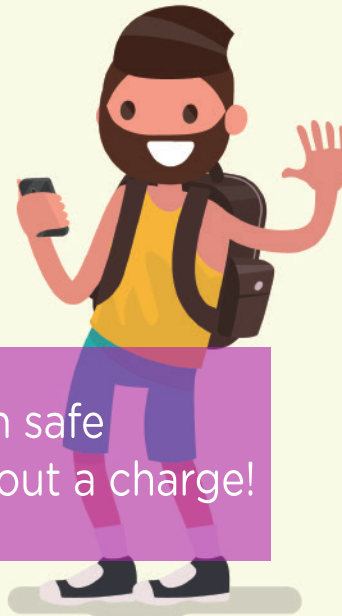
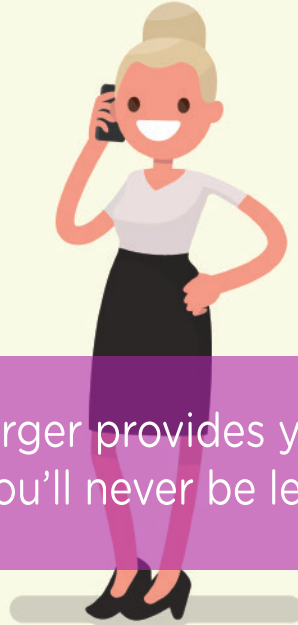
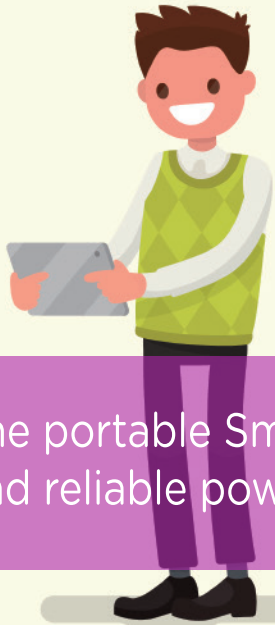
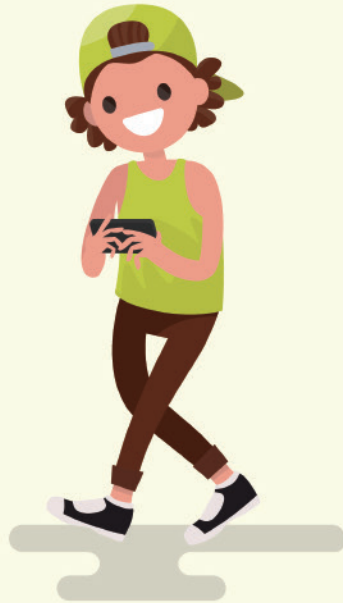
- Dimensions: 50mm (L) X 30mm (W) X 10mm (H)(SABLE)
50mm (L) X 42mm (W) X 12mm (H)(MANTARAY)
- Stream media over wireless enabled devices up to 5 users simultaneously
- Supports various personal computer and mobile operating systems to access and stream music, videos, photos and documents
- Built-in USB A port to support USB Mass Storage for file sharing
- Wireless internet pass-through connection, supporting 802.11 b/g/n speeds and works as an Access Point
- Available mobile client app with copy, delete, upload, and search function to locate and access files much faster
- Built-in USB Connector for Power Only

MANTARAY

Part# MTR-WiFi-USB

Battery life subject to normal usage conditions.

Product specifications subject to change without notice. Product images may not look identical to the actual products.



The portable Smart Charger provides you with safe and reliable power, so you'll never be left without a charge!

MFi 6.4 Contract Manufacturer

Connectors and Authentication IC are Apple proprietary components



PORTABLE SMART CHARGER

For Most Smartphones and USB Powered Devices

Built in Multi-Layer Battery Protection:

OCP: Over Current Protection

OVP: Over Voltage Protection

OTP: Over Temperature Protection

OPP: Over Power Protection

SCP: Short Circuit Protection



Maximum Portability

Tangle-free built-in Lightning and Micro USB cables.



Lightning connector

A Lightning connector is conveniently built-in to accommodate charging for iPhone, iPod, and iPad



Micro USB Connector

Features a Micro USB charging and data sync cable to support most smartphones and tablets.



USB A Port

Additional charging port for any USB powered devices.



BOOST AC INVERTER

Part# P7-BOO208

- 20800mAh 18650 Li-ion Battery
- Input: 2A @ 5VDC x 2 (Micro B x2)
- Output: 2.4A @ 5VDC (USB-A1), 2.4A @ 5VDC (USB-A2), 100W max @ 110/220VAC
- LCD Display for Battery Status with a Multifunction Button
- 3 LED for AC output indication
- Built-in protection features for overheat, short-circuit and overcharge/discharge
- Adaptive charging output for maximum compatibility
- Auto On/Off Features for convenient usage and energy saving



APPOLO 50

Part# 7-APP50

- Dimensions: 152mm (L) X 78mm (W) X 15mm (H)
- 5000mAh/10000mAh Li-Polymer Battery
- Input: Solar panel: Micro: 5V/1A
- Output: USB-A1: 5V/1A, USB-A2: 5V/2.1A, Shared 2.1A Max
- 4 LEDs for Battery Status with a Multifunction Button
- Built-in protection features for overheat, short-circuit and overcharge/discharge
- Auto On/OFF features for convenient usage and energy saving
- Supports most USB charging sources
- Ideal for long flights or anytime your device might run out of power

Product specifications subject to change without notice. Product images may not look identical to the actual products.



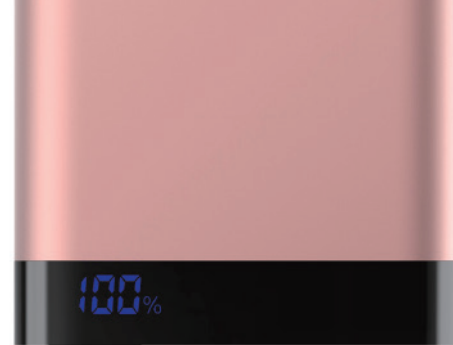
T-REX AC INVERTER

Part# P7-PD-T-REX208-US2P-RD

Part# P7-PD-T-REX208-US3P-RD

Part# 7-PD-T-REX208-EU-GN

- Dimension: 175mm (L) X 112mm (W) X 35mm (H)
- 20800mAh 18650 Li-ion Battery
- Input: QC 15W (Micro USB)
- Output: 2.4A @ 5VDC (USB-A1), 2.4A @ 5VDC (USB-A2), 100W max @ 110/220VAC
- 4 LEDs for Battery Status with a Multifunction Button (LED display optional)
- 1 LED for AC output indication
- Built-in protection features for overheat, short-circuit and overcharge/discharge
- Adaptive charging output for maximum compatibility
- Auto On/Off Features for convenient usage and energy saving



USB-A
2×USB-A



USB-A+USB Type-C

PROSLIM MAX 167/200

Part # P7-PROS-167

Part # P7-PROS-200

- Dimensions: 152mm (L) X 68mm (W) X 24mm (H)(167) 172mm (L) X 68mm (W) X 24mm (H) (200)
- 16750mAh / 20100mAh 20650 Li-ion Battery Cells
- Input: 2A @ 5VDC (Micro USB); 3A @ 5VDC (USB-C)
- Outputs:
 - 16750mAh: 2.4A @ 5V DC (USB-A1), 2.4A @ 5V DC (USB-A2) , Total 5V 3.4A Shared
 - 20100mAh: 3.4A @ 5V DC Shared (USB-A, USB Type-C)
- DIGI-Display for Battery Status with a multi-function button
- Built-in protection features for overheat, short-circuit and overcharge/discharge
- Auto On/Off features for convenient usage and energy savings
- Support most devices with USB charging port



POUCH 50/100/200

art# P7-POU 50/100/200

- Dimensions: 140mm (L) X 73mm (W) X 12mm (H) (50)
161mm (L) X 73mm (W) X 15mm (H) (100)
161mm (L) X 73mm (W) X 24mm (H) (200)
- 5000mAh/10000mAh/20000mAh Li-Polymer Type Battery Cells
- Input: 2A @ 5VDC (Micro USB)
- Output: 5000mAh: 2.4A @ 5VDC (USB-A)
10000mAh/20000mAh 2.4A @ 5V DC (USB-A1), 2.4A @ 5V DC (USB-A2)
Total 3.4A Shared
- 4 LEDs for Battery Status with a Multifunction Button
- Built-in protection features for overheat, short-circuit and overcharge/discharge
- Auto On/Off features for convenient usage and energy saving
- Supports most USB charging sources
- Ideal for long flights or anytime your device might run out of power



Product specifications subject to change without notice. Product images may not look identical to the actual products.



DENIM 50/100

Part# P7-DEN-50

Part# P7-DEN-100

- Dimensions: 132mm (L) X 73mm (W) X 13mm (H) (50)
132mm (L) X 73mm (W) X 16.5mm (H) (100)
- 5000mAh/10000mAh Li-Polymer Type Battery Cells
- 5000mAh: Input: 2A @ 5VDC (Micro USB)
Output: Up to 2.4A @ 5VDC (USB-A)
- 10000mAh: Input: Up to 2A @ 5VDC (Micro USB)
Output: 1A @ 5VDC (USB-A1); 2.4A @ 5VDC (USB-A2)
Total 3.4A Shared
- DIGI-Display for Battery Status with a Multifunction Button
- Built-in protection features for overheat, short-circuit and overcharge/discharge
- Auto On/Off features for convenient usage and energy saving
- Supports most USB charging sources
- Ideal for long flights or anytime your device might run out of power



FELIX 50/100

Part# P7-FEL-50

Part# P7-FEL-100

- Dimensions: 138mm (L) X 73mm (W) X 12mm (H)(50)
138mm (L) X 73mm (W) X 17mm (H) (100)
- 5000mAh/10000mAh Li-Polymer Type Battery Cells
- 5000mAh: Input: 2A @ 5VDC (Micro USB)
Output: Up to 2.1A @ 5VDC (USB-A)
- 10000mAh: Input: Up to 2A @ 5VDC (Micro USB)
Output: 1A @ 5VDC (USB-A1); 2.4A @ 5VDC (USB-A2)
Total 3.4A Shared
- DIGI-Display for Battery Status with a Multifunction Button
- Built-in protection features for overheat, short-circuit and overcharge/discharge
- Auto On/Off features for convenient usage and energy saving
- Supports most USB charging sources
- Ideal for long flights or anytime your device might run out of power



DYNASON 67/100/134/167/200/268

Part#P7-DYN-67/100/134/167/200/268

- 6700, 10050, 13400, 16750, 20100, 26800mAh 18650 Battery Cells.

Input: 2.4A @ 5V (6700/10050/13400mAh)

5V/3A, USB-C & 5V2A, Micro-B (16750/20100/26800mAh)

Output:

6700mAh: 2.4A @ 5VDC (USB-A)

10050/13400mAh: 2.4A @ 5VDC (USB-A1), 2.4A @ 5VDC (USB-A2) Total 2.4A Shared

16750mAh: 3A @ 5VDC (USB-C), 2.4A @ 5VDC (USB-A), Total 3.1A Shared

20100mAh: 3A @ 5VDC (USB-C), 2.4A @ 5VDC (USB-A1)

2.4A @ 5VDC (USB-A) Total 3.1A Shared

26800mAh: 3A @ 5VDC (USB-C), 2.4A @ 5VDC (USB-A1)

2.4A @ 5VDC (USB-A) Total 3.1A Shared





HUB 67/100/134

Part# P7-HUB-67/100/134

- Dimensions: 98mm (L) X 44mm (W) X 22mm (H) (67)
102mm (L) X 62.5mm (W) X 22mm (H) (100)
110mm (L) X 82mm (W) X 22mm (H) (134)
- 6700mAh / 10050mAh / 13400mAh 18650 Li-ion Battery
- Input: 2A @ 5VDC (USB-C)
- Output: USB-A & USB-C shared 2.4A (6700mAh)
USB-A x 2 & USB-C shared 3.1A (10050mAh)
USB-A x 2 & USB-C shared 3.1A (13400mAh)
- 4 LEDs for Battery Status with a Multifunction Button
- Built-in protection features for short-circuit and overcharge/discharge
- Supports most USB charging sources
- Ideal for anytime your device might run out of power.



BAMBOO 67/100/167

Part# P7-BAM-67/100/167

- Dimensions: 96mm (L) X 43mm (W) X 23mm (H) (67)
110mm (L) X 80mm (W) X 23mm (H) (100)
150mm (L) X 62.5mm (W) X 23mm (H) (167)
- 6700mAh/10050mAh/20100mAh 18650 Type Battery Cells
- Input: 2A @ 5VDC (Micro USB)
- Output:
6700mAh/10050mAh: 2.4A @ 5VDC (USB-A)
16750mAh 2.4A @ 5V DC (USB-A1),
2.4A @ 5V DC (USB-A2) , Total 3.4A Shared
- 4 LEDs for Battery Status with a Multifunction Button
- Built-in protection features for overheat, short-circuit and overcharge/discharge
- Auto On/Off features for convenient usage and energy saving
- Supports most USB charging sources
- Ideal for long flights or anytime your device might run out of power



ENERGY 67/100/167

Part# P7-ENE 67/100/167

- Dimensions: 96mm (L) X 44mm (W) X 22mm (H) (67)
102mm (L) X 62.5mm (W) X 22mm (H) (100)
152mm (L) X 62.5mm (W) X 22mm (H) (167)
- 6700mAh / 10050mAh / 16750mAh 18650 Li-ion Battery
- Input: 2A @ 5VDC (USB-C) (6700mAh)
2A @ 5VDC (USB-C / Micro B) (10050mAh)
2A @ 5VDC (Micro B) 3A @ 5VDC (USB-C) (16750mAh)
- Output: USB-A&USB-C shared 2.4A (6700mAh)
USB-A&USB-C shared 3.1A (10050mAh)
USB-A&USB-C shared 3.1A (16750mAh)
- 4 LEDs for Battery Status with a Multifunction Button
- Built-in protection features for short-circuit and overcharge/discharge
- Supports most USB charging sources
- Ideal for anytime your device might run out of power.



BLADE 67/100/167

Part# P7-BLA 67/100/167

- Dimensions: 102mm (L) X 48.5mm (W) X 22.5mm (H) (67)
102mm (L) X 66.5mm (W) X 22.5mm (H) (100)
132mm (L) X 81.5mm (W) X 22.5mm (H) (167)
- 3350mAh / 6700mAh / 16750mAh 18650 Li-ion Battery
- Input: 2A @ 5VDC (USB-C) (6700mAh / 10050mAh)
3A @ 5VDC (USB-C) (16750mAh)
- Output: USB-A&USB-C shared 2.4A (6700mAh)
USB-A&USB-C shared 3.1A (10050mAh)
USB-A&USB-C shared 3.1A (16750mAh)
- 4 LEDs for Battery Status with a Multifunction Button
- Built-in protection features for short-circuit and overcharge/discharge
- Supports most USB charging sources
- Ideal for anytime your device might run out of power.

Product specifications subject to change without notice. Product images may not look identical to the actual products.



LIPSTICK

Part# P7-LIP33

- Dimensions: 100mm (L) X 25mm (W) X 25mm (H)
- 3350 mAh 20650 Li-Ion Battery Cell
- Input: 1.5A @ 5V DC (Micro B)
- Output: 2.1A @ 5VDC (USB-A)
- 4 LEDs for Battery Status with a Multifunction Button
- Built-in protection features for overheat, short-circuit and overcharge/discharge
- Adaptive Charging Output for maximum compatibility
- Auto On/OFF features for convenient usage and energy saving
- Supports most USB charging sources
- Ideal for long flights or anytime your device might run out of power



ATOMIC104

Part# P7-ATO104

- Dimensions: 89.5mm (L) X 44mm (W) X 44mm (H)
- 10400mAh 18650 Li-Ion Battery Cell
- Input: Up to 2A @ 5VDC (Micro USB)
- Output: 3.4A @ 5V DC Shared (USB-A1, USB-A2)
- Sleek Aluminum Body Design
- 4 LEDs for Battery Status with a Multifunction Button
- Built-in protection features for overheat, short-circuit and overcharge/discharge
- Adaptive Charging Output for maximum compatibility
- Auto On/Off Features for convenient usage and energy saving
- Supports most USB charging sources
- Ideal for long flights or anytime your device might run out of power



TRAVELLER100 SERIES

Part# P7-TL100

- Dimensions: 137mm (L) X 58mm (W) X 28mm (H)
- 10050mAh 18650 Li-Ion Battery Cells
- Input: Multi-voltage AC 100-240V / 0.3A; Micro USB 2A @ 5V DC
- Outputs:
 - USB-A1 = 2.1A @ 5V DC, USB-A2 = 2.4A @ 5V DC (P7-TL100-M2AB)
 - USB-A1 = 2.4A @ 5V DC, USB-A2 = QC 3.0 15W (P7-TL100-QCAB)
 - USB-A1 = 2.1A @ 5V DC, USB-A2 = 2.4A @ 5V DC Shared (USB-A2, USB Type-C) (P7-TL100-C2AB)
- 4 LEDs for Battery Status with a multi-function button
- Built-in protection features for overheat, short-circuit and overcharge/discharge
- Auto On/Off features for convenient usage and energy savings
- Support most devices with USB charging port
- Ideal for long flights or anytime your devices might run out of power



SLING134 SERIES

Part# P7-SL134

- Dimensions: 141mm (L) X 60mm (W) X 22mm (H)
- 13400mAh 18650 Li-Ion Battery Cells
- Input: MicroUSB 2A @ 5V DC
- Outputs:
 - MicroUSB Version
 - 2 USB-A ports Shared 2.1A @ 5V DC, 2.4A @ 5V DC Fixed MicroUSB Connector
 - Lightning Version
 - 2 USB-A ports Shared 2.1A @ 5V DC, 2.4A @ 5V DC Fixed Apple Lightning Connector
- 4 LEDs for Battery Status with a multi-function button
- Built-in protection features for overheat, short-circuit and overcharge/discharge
- Auto On/Off features for convenient usage and energy savings
- Support most devices with USB charging port



Product specifications subject to change without notice. Product images may not look identical to the actual products.



SIGMA 50/100

Part# P7-SIG50/100

- Dimensions: 138mm(L) x 65mm(W) x 15(H) (50)
156mm(L) x 65mm(W) x 18(H) (100)
- 5000mAh / 10000mAh Li-polymer Battery
- Input: 2A @ 5VDC (Micro USB)
- Output: 2.4A @ 5VDC (USB-A)
10W Max (Wireless Output)
- 4 LEDs for PowerBank & 1 LED for Wireless Charging Functions
- Built-in protection features for overheat, short-circuit and overcharge/discharge
- Adaptive Charging Output for maximum compatibility



OMEGA 50/100

Part# P7-OME50/100

- Auto On/Off Features for convenient usage and energy saving
- Single-coil wireless charging design
- Efficiency: >70%
- Safety: Foreign Object Detection & Thermal Shutdown Function
- Wireless Charging Distance: 5 - 8mm



DISK & STAND

Part# P7-H6315

- Dimensions: DISK, 98mm (D) x 14mm (T);
UFO, 106mm (D) x 11mm (T);
STND, 102mm (D) X 100mm (W) x 90mm (T);
- Type: Wireless Charging Pad
- Standard: Single Coil WPC Qi v1.2
- Input: 5VDC (Micro USB)
- Wireless Output: >5W
- Efficiency: >70%
- Safety: Foreign Object Detection & Thermal Shutdown Function
- Smart Feature: Smart LED Notification
- Wireless Charging Distance: 5 - 8mm

UFO

Part# P7-H6303

STAGE4

Part# P7-STG4

- Dimension: 136mm (L) X 74mm (W) X 30mm (H)
- Type: Charging Hub with Wireless Charger
- Input: Multi-voltage AC (100 ~ 240V)
- Output: 6.8A Max @ 5VDC
- USB-A x 3, USB-C, Integrated USB-C & Micro USB Cable
- Wireless Output: Single Coil WPC Qi v1.2, 5W
- Efficiency: >70%
- Safety: Foreign Object Detection & Thermal Shutdown Function
- Smart Feature: Smart LED Notification
- Wireless Charging Distance: 5 - 8mm



BETA

Part# P7-BET

- Dimensions: 110mm (L) x 90mm (W) x 90mm (T)
- Type: Wireless Charging Pad
- Standard: Single Coil WPC Qi v1.2
- Input: QC (Micro USB)
- Wireless Output: 10W
- Efficiency: >70%
- Standard 3-coil design
- Safety: Foreign Object Detection & Thermal Shutdown Function
- Smart Feature: Smart LED Notification
- Wireless Charging Distance: 5 - 8mm



Q SQUARE & STAND

Part# P7-QSQU

- Dimensions: 106mm (L) x 90mm (W) x 85mm (T)
- Type: Wireless Charging Pad
- Standard: Single Coil WPC Qi v1.2
- Input: QC (Micro USB)
- Wireless Output: 10W
- Efficiency: >70%
- magnetic stand
- Safety: Foreign Object Detection & Thermal Shutdown Function
- Smart Feature: Smart LED Notification
- Wireless Charging Distance: 5 - 8mm



Q TWIN-STAR 1

Dual Wireless Charger Pad

Part# P7-QTWI

- Dimensions: 196mm (L) x 110mm (W) x 12mm (T)
- Type: Wireless Charging Pad
- Standard: Single Coil WPC Qi v1.2
- Input: DC JACK
- Wireless Output: 10W x 2
- Efficiency: >70%
- Charging Two Devices at the same time
- Safety: Foreign Object Detection & Thermal Shutdown Function
- Smart Feature: Smart LED Notification
- Wireless Charging Distance: 5 ~ 8mm

Q TWIN-STAR 2

Dual Wireless Charger Pad

Part# P7-QTWI

- Dimensions: 180mm (L) x 90mm (W) x 15.5mm (T)
- Type: Wireless Charging Pad
- Standard: Single Coil WPC Qi v1.2
- Input: DC JACK
- Wireless Output: 10W (Mobile phone, Apple Watch)
- Efficiency: >70%
- Charging Two Devices at the same time
- Safety: Foreign Object Detection & Thermal Shutdown Function
- Smart Feature: Smart LED Notification
- Wireless Charging Distance: 5 ~ 8mm



Q VENT

Magnetic Qi Wireless Car Charger Mount

Part# P7-QVEN

- Dimensions: 90mm (L) x 90mm (W) x 20mm
- Type: Wireless Charging Pad
- Standard: Single Coil WPC Qi v1.2
- Input: QC (Micro USB)
- Wireless Output: 10W
- Efficiency: >70%
- Car mount (AC Vent) Design
- Safety: Foreign Object Detection & Thermal Shutdown Function
- Smart Feature: Smart LED Notification
- Wireless Charging Distance: 5 - 8mm



Q WING

Wireless Car Charger Mount

Part# P7-QWIN

- Type: Wireless Charging Pad
- Standard: Single Coil WPC Qi v1.2
- Input: QC (Micro USB)
- Wireless Output: 10W
- Efficiency: >70%
- Car mount (AC Vent) Design
- Safety: Foreign Object Detection & Thermal Shutdown Function
- Smart Feature: Smart LED Notification
- Wireless Charging Distance: 5 - 8mm



Product specifications subject to change without notice. Product images may not look identical to the actual products.



SMART C-DOCKING Q

The USB-C Multiport Adapter

Part# P7-DOC

- P7-SIG60/120 Input: 2A @ 5VDC (Micro USB)
- P7-SIG60 Output: 2A @ 5VDC (USB-A) Wireless Output: 10W Max
- P7-SIG120 Output: 3A @ 5VDC Shared (USB-Ax2) Wireless Output: 10W Max
- 4 LEDs for Battery Status with a Multifunction Button
- Built-in protection features for overheat, short-circuit and overcharge/discharge; support 1-2 coils
- 4 LEDs for Battery Status with a Multifunction Button
- Built-in protection features for overheat, short-circuit and overcharge/discharge
- Adaptive Charging Output for maximum compatibility
- Auto On/Off Features for convenient usage and energy saving
- Safety: Foreign Object Detection & Thermal Shutdown Function
- Wireless Charging Distance: 5 ~ 8mm



Q ROUND

Part# P7-Q ROU

- Dimensions: 90mm (L) x 16mm (T)
- Type: Wireless Charging Pad
- Standard: Single Coil WPC Qi v1.2
- Input: Q.C (Micro USB)
- Wireless Output: 10W
- Efficiency: >70%
- Safety: Foreign Object Detection & Thermal Shutdown Function
- Smart Feature: Smart LED Notification
- Wireless Charging Distance: 5 ~ 8mm



HUBC-HR2

Part# P7-X6226-HUB

- Dimensions: 109mm (L) X 46mm (W) X 13mm (H)
- Supports USB 3.1 Gen 1, Backward compatible with USB standard devices
- Supports USB-C Charging
- Supports USB OTG for Android devices
- Optional USB PD support up to 100W (PD optional)
- Supports Macbook, Smart phone and Pad with TYPE-C Port
- Supports SD/SDHC/XDHC memory card up to 2TB
- Supports HDMI 2.0 and DP1.2HDMI-enabled TV or display in up to 1080p at 60Hz or UHD (3840x2160) at 30Hz
- Supports simultaneous connection to USB3.0 hard drive and mouse or Keyboard

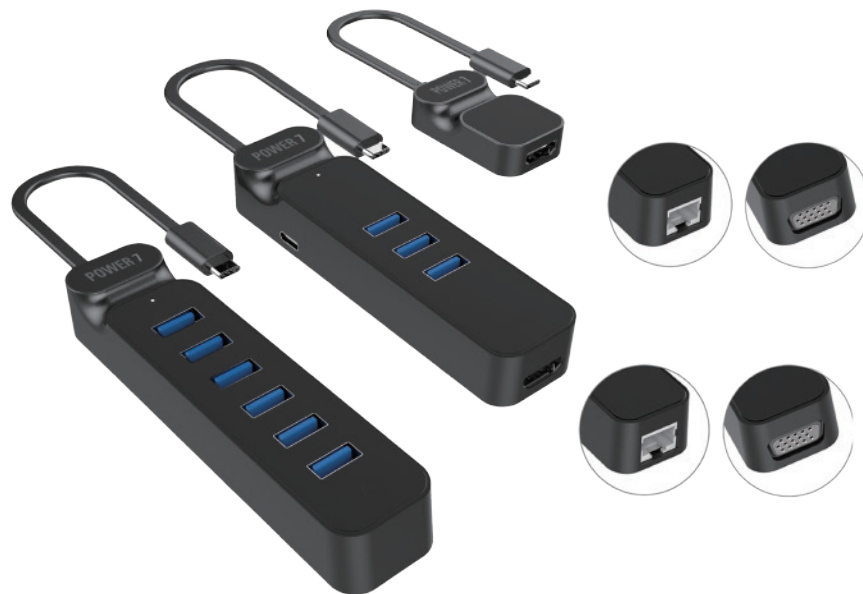


CYLINDRICAL C

Part# P7-TC31-MLT-H3U

- Dimensions: 48mm (L) X 31mm (W) X 18mm (H)
48mm (L) X 33.5mm (W) X 20mm (H)
48mm (L) X 34mm (W) X 20.5mm (H)
- Supports USB 3.1 Gen 1, Backward compatible with USB standard devices
- Supports LAN 10/100/1000 (Selected Model Only)
- Supports SD/SDHC/XDHC memory card up to 2TB.
- Supports HDMI 1.4A and DP 1.2, HDMI enabled TV or Display up to 1080P at 60Hz or UHD (3840X2160) at 30Hz (version 2)
- 3 Ports USB Hub, 2 x USB 3.0, 1 x USB-C, Total output of 1.2A @ 5V (Selected Model Only)
- Supports DC In at 20V/3A (6 Port Model Only)
- Optional USB-C PD Charging up to 60W
- Supports USB OTG for Android Devices
- Supports Apple Macbook, Smartphones and Pad with USB-C Port
- Supports simultaneous connection to external USB 3.0 HDD, mouse and keyboard
- Support Windows 10, Mac OS 10.6 and above, Free installation Drivers
- AV output need devices' USB-C port to support DP
- Compatible with Apple MacBook, Microsoft Lumia 950XL, Google Chromebook Pixel, Dell XPS 12/13, HuaWei Matebook, HP Elite X2/X3, Lenovo Notebook

Product specifications subject to change without notice. Product images may not look identical to the actual products.



RECTANGLE C

Part# P7-TC31-CAM-BK

- Dimensions: 48mm (L) X 27mm (W) X 15mm (H)
122mm (L) X 30mm (W) X 20mm (H)
138mm (L) X 30mm (W) X 20mm (H)
- Supports USB 3.1 Gen 1, Backward compatible with USB standard devices
- Supports LAN 10/100/1000 (Selected Model Only)
- Supports SD/SDHC/XDHC memory card up to 2TB
- Supports HDMI 1.4A and DP 1.2, HDMI enabled TV or Display up to 1080P at 60Hz or UHD (3840X2160) at 30Hz (version 2)
- 3 Ports USB Hub, 2 x USB 3.0, 1 x USB-C, Total output of 1.2A @ 5V (Selected Model Only)
- Supports DC In at 20V/3A (6 Port Model Only)
- Optional USB-C PD Charging up to 60W
- Supports USB OTG for Android Devices
- Supports Apple Macbook, Smartphones and Pad with USB-C Port
- Supports simultaneous connection to external USB 3.0 HDD, mouse and keyboard
- Support Windows 10, Mac OS 10.6 and above, Free installation Drivers
- AV output need devices' USB-C port to support DP
- Compatible with Apple MacBook, Microsoft Lumia 950XL, Google Chromebook Pixel, Dell XPS 12/13, HuaWei Matebook, HP Elite X2/X3, Lenovo Notebook

Product specifications subject to change without notice. Product images may not look identical to the actual products.



SKATE C

Part# P7-SKA

- Dimensions: 109mm (L) X 64mm (W) X 11mm (H)
- Supports USB 3.1 Gen 1, Backward compatible with USB standard devices
- Supports USB-C Charging
- Supports USB OTG for Android devices
- Optional USB PD support up to 100W (PD optional)
- Supports Macbook, Smart phone and Pad with TYPE-C Port
- Supports SD/SDHC/XDHC memory card up to 2TB
- Supports HDMI 2.0 and DP1.2HDMI-enabled TV or display in up to 1080p t 60Hz or UHD (3840x2160) at 30Hz
- Supports simultaneous connection to USB3.0 hard drive and ouse or Keyboard



KITKAT C

The USB-C Multiport Adapter

Part# P7- KIT

- Dimensions: 110mm (L) X 46mm (W) X 11.8mm (H)
- Supports USB 3.1 Gen 1, Backward compatible with USB standard devices
- Supports LAN 10/100/1000 (Selected Model Only)
- Supports SD/SDHC/XDHC memory card up to 2TB.
- Supports HDMI 1.4A and DP 1.2, HDMI enabled TV or Display up to 1080P at 60Hz or UHD (3840X2160) at 30Hz
- 3 Ports USB Hub, 2 x USB 3.0, 1 x USB-C, Total output of 1.2A @ 5V
- USB-C PD Charging up to 60W
- Supports USB OTG for Android Devices
- Supports Apple Macbook, Smartphones and Pad with USB-C Port
- Supports simultaneous connection to external USB 3.0 HDD, mouse and keyboard
- Support Windows 10, Mac OS 10.6 and above, Free installation Drivers
- AV output need devices' USB-C port to support DP



BEE MINI TYPE-C HUB

Part# P7-BEE-C

- Dimensions: 85mm (L) X 28mm (W) X 9mm (H)
- Supports USB 3.1 Gen 1, Backward compatible with USB standard devices
- 2 Ports USB Hub, 1 x USB 3.0, 1 x USB-C, Total output of 1.5A @ 5V
- Optional USB-C PD Charging
- Supports USB PD up to 60W
- Supports USB OTG for Android Devices
- Supports Apple Macbook, Smartphones and Pad with USB-C Port
- Supports simultaneous connection to external USB 3.0 HDD, mouse and keyboard
- Support Windows 10, Mac OS 10.6 and above, Free installation Drivers



BEE PLUS TYPE-C HUB

Part# P7-BEE-C

- Dimensions: 110mm (L) X 46mm (W) X 14mm (H)
- Supports USB 3.1 Gen 1, Backward compatible with USB standard devices
- Supports USB-C Charging
- Supports USB OTG for Android devices
- Optional USB PD support up to 100W (PD optional)
- Supports Macbook, Smart phone and Pad with TYPE-C Port
- Supports SD/SDHC/XDHC memory card up to 2TB
- Supports HDMI 2.0 and DP1.2HDMI-enabled TV or display in up to 1080p t 60Hz or UHD (3840x2160) at 30Hz
- Supports simultaneous connection to USB3.0 hard drive and ouse or Keyboard



SMART C-DOCKING MINI

Part# P7-TC31-FOX-MINI

- Dimensions: 67.3mm (L) X 22.5mm (W) X 124.6mm (H)
- Supports USB 3.1 Gen 1, Backward compatible with USB standard devices
- Supports LAN 10/100/1000
- Supports SD/SDHC/XDHC memory card up to 2TB
- Supports HDMI 1.4A and DP 1.2, HDMI enabled TV or Display up to 1080P at 60Hz or UHD (3840X2160 at 30Hz (version 2)
- 3 Ports USB Hub, 2 x USB 3.0, 1 x USB-C, Total output of 1.2A @ 5V
- Supports DC In
- Supports USB-C PD Charging up to 60W
- Supports USB OTG for Android Devices
- Supports Apple Macbook, Smartphones and Pad with USB-C Port
- Supports simultaneous connection to external USB 3.0 HDD, mouse and keyboard
- Support Windows 10, Mac OS 10.6 and above, Free installation Drivers
- AV output need devices' USB-C port to support DP
- Compatible with Apple MacBook, Microsoft Lumia 950XL, Google Chromebook Pixel, Dell XPS 12/13, HuaWei Matebook, HP Elite X2/X3, Lenovo Notebook



Product specifications subject to change without notice. Product images may not look identical to the actual products.



ENCLOSURE

For 2.5" and 3.5" SSD/HDD



Designed for **SATA** hard drives



Supports **hot plug-and-play**



Available in **USB 3.1, USB 3.0, USB 2.0, eSATA, Firewire & USB Type-C** interface



NORM SSD ENCLOSURE

Part#:P7-NOR-SSD

- Dimensions: 90mm (L) X 53mm (W) X 9mm (H)
- USB3.0 Micro B or TYPE-C interface optional
- Support USB 3.1 Gen1 and Gen 2, data transmission rate Up to 10Gbps
- Support M.2 and MSATA interface SSD
- Support Windows 7/8/10, Mac OS 10.6 above



CAN SSD ENCLOSURE

Part#:P7-CAN-SSD

- Dimensions: 90mm (L) X 53mm (W) X 9mm (H)
- USB3.0 Micro B or TYPE-C interface optional
- Support USB 3.1 Gen1 and Gen 2, data transmission rate Up to 10Gbps
- Support M.2 and MSATA interface SSD
- Support Windows 7/8/10, Mac OS 10.6 above



COUGAR

2.5" USB3.1 HDD ENCLOSURE

Part# COU-S250U3.1

Designed for 2.5" SATA HDD

- Compliant with USB3.1 Specification Revision 1.0, Backward compliant USB3.0/2.0/1.1, Support UASP
- USB bus rate up to 10Gbps
- Serial ATA bus rate up to 6Gbps, Support SATA II 3Gbps and 1.5Gbps
- Support SATA 2.5" HDD
- Power and R/W active LED
- Support USB Type-C connection and usb Hot Plug feature
- USB3.1 TYPE-C Connector and USB 3.1 TYPE-C to USB3.1 Standard-A Cable, Support USB type-C positive and negative inserts using
- Hardware: Any desktop or Notebook computer with an available USB3.1/USB3.0/USB2.0 port



ANGEL

2.5" USB3.1 HDD ENCLOSURE

Part# KIT-S250U3.1



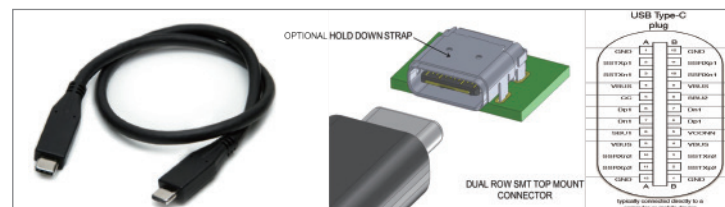
TORPEDO

2.5" USB3.0 HDD ENCLOSURE

Part# TOR-S250U

- Supports Windows XP/Vista/Windows 7/Windows 8 and above, Mac OS 10.4 and above
- USB BUS POWER 900mA

USB3.1 TYPE-C





TAIWAN OFFICE

5F.-3, No.258, Liancheng Road, Zhonghe District, New Taipei City 235, Taiwan
Tel: 886.2.8227.1790 Fax: 886.2.8227.1026



CHINA SHENZHEN OFFICE

Building A , ZhangKen Industry Zone, Ming Zhi Town,Bao An District, Shenzhen, China
Tel: 86.755.8886.8949 Fax: 86.755.8179.8032



CHINA DONGGUAN FACTORY

No.28 Binjiang Blvd Shishuikou Village, Qiaotou Town, Dongguan City,Guang Dong Province ,China
Tel: 86.769.8929.7777 Fax: 86.769.8927.9777 sales@power7tech.com.cn



MFi 6.4 Contract Manufacturer

Connectors and Authentication IC are Apple proprietary components

NEW THINKING, **NEW** SOLUTION!



All trademarks or registered trademarks are property of their respective owners.
Specifications are subject to change without notice. Product images may not look identical to actual products.

www.power7tech.com