



Shenzhen Company :

3-A1,Building A,Qingchuangcheng,Pinkexiao zhen,Zhangkeng community,
Minzhi Town,Longhua District,Shenzhen,Guangdong Province,China
Tel: 86.755.8886.8949

China Factory :

No.28 Binjiang Blvd., Shishuikou Village,Qiaotou Town,Dongguan,Guang Dong Province
Tel: 86.769.8929.7777

Vietnam Factory :

P-9, Trang Due Industrial Zone Belongs To Dinh Vu - Cat Hai Economic Zone, An Hoa
Commune,An Duong District, Hai Phong City
Tel: 84.225.3558.880

Web: www.power7tech.com

Typec Docking Storage /IOT





Dongguan Factory



Vietnam factory

– COMPANY PROFILE

Power 7 technology designs and manufactures complex external and wireless storage, mobile power devices, and peripheral solutions for various computer and mobile IOS platforms. We are recognized worldwide for our excellence in technology, creativity, innovation in design, quality and services we offer our experience of 20 years in OEM/ODM and Electronics manufacturing Services (EMS) has solid track records. We maintain long-standing relationships with numerous world-class and local companies that are not only depending on our expertise and services but also value us as their partners!

– COMPANY VISION

To design, manufacture and deliver quality products & solution to our customer fast and Superior to our competitors. To become partner of choice by ongoing quest for excellence- to accept projects that are within our capabilities and concentrate on the once we excel in.

– COMPANY PHILOSOPHY

Competitive Element
Heavy investment in research and development creates competitive advantages. Three principals guide the engineering & production practices: **QUALITY QUALITY and quality**. This is our strongest competitive advantage! **Creative Element**
We believe that knowledge, experience and imagination go hand in hand and stimulate creativity in developing feature product. **Accountability Element**
We take pride in our diligence and we stand behind our products and services.



DK-01-N

- USB C Cable*1: 81W output Gen2, DP1.4,PD3.0
- Adaptor*1: Connect to Docking, support 150W
- DC input*1: Connect to 150W charger
- HDMI2.0*2+PD1.4*1: connect to Monitor, TV or projector.Support HDMI up to 1080p at 120Hz or UHD 3840x2160 at 60Hz, Support 4K60HZ and MST;
- USB-A 3.2 Gen2*2: Support up to 10Gbps data transmission. Downward compatible with USB2.0
- USBA 2.0*2: Most big data transmission 480Mbps;
- USB-C 3.2 Gen2*1: Support up to 10Gbps data transmission. Downward compatible with USB2.0
- USB-C *1: Support PD 18W
- USB-A *1: Support QC18W
- RJ45 *1: Integrated10/100/1000M transceiver
- SD/TF *1: Support SDHC/SDXC/UHS-1
- Audio*2: Support for 48k stereo output and mic input,can't use in the same time.
- Housing: Aluminum/Plastic;
- Product Dimension: 114.7*53.43*139.85mm





H2

- Micro USB3.0 Port: Connect computer and input 5V/2A
- USB2.0 A Port: Output 5V/0.5A ,Data exchange and Discharging Port, Only for smart phone or pad
- SD Slot: Supports SD/SDHC/SDXC/USH-I memory card up to 2TB
- Built-in 5000mAh Polymer battery cell
- Built-in SATA socket: Supports 2.5"SATA HDD up to 9.5mm
- 4 LEDs for Power Status and Data Exchange
- Power on/off button: Short pressing to Show percentage of battery level ,Long pressing 5s will Forced Shutdown.
- Housing: Plastic
- Product Dimension: 129*83.5*25mm





H3

- Micro USB3.0 Port: Connect to PC as a External HDD and input 5V/2A
- USB C Female Port: Output 5V/0.5A, Data exchange and Discharging Port, Only for smart phone or pad
- USB2.0 A Port: Output 5V/0.5A ,Data exchange and Discharging Port, Only for smart phone or pad
- SD Slot: Supports SD/SDHC/SDXC/USH-I memory card up to 2TB
- Built-in 5000mAh Polymer battery cell
- Built-in SATA socket: Supports 2.5"SATA HDD up to 9.5mm
- 4 LEDs for Power Status and Data Exchange
- Power on/off button: Short pressing to Show percentage of battery level ,Long pressing 5s will Forced Shutdown.
- Housing: Plasticµfiber
- Product Dimension: 117*80*22mm





USB4 SSD Enclosure

- USB-C Receptacle: Support USB4 ,Data rate up to 40Gbps
- Support NTFS/Fat32/ex FAT file system (Mac OS does not support NTFS)
- Built in M.2 interface. Support PCIE NVME protocol data transmission.
- Housing: Aluminum/Plastic/Silicone
- Product Dimensions: 140*60*21mm



FS-01

- USB-C Receptacle: Support USB3.2 Gen2 and Gen1, Data rate up to 10G
- Support M.2 interface SSD
- Built in Msata connector. support SATA III DATA transmission
- Built in fingerprint module
- Housing: Aluminum/ZN
- Product Dimension: 102*30*9mm



GS01-MES Fingerprint SSD

- USB-C Receptacle: Support USB3.1 Gen2 and Gen1, Data rate up to 10G
- Power/DATA LED: The LED lights up blue, and the read-write flashes blue.
- Support NTFS/Fat32/exFAT; Built in Msata connector. Support SATA III DATA transmission
- Built in fingerprint module; Encryption ATA LOCKED
- Housing: Aluminum/ZN
- Size: 102.4*30.4*9.4mm



H4

- USB C Female Port A: Connect to PC as a External SSD and input 5V/2A
- USB C Female Port B: Output 5V/0.5A, Data exchange and Discharging Port, Only for smart phone or pad
- SD Slot: Supports SD/SDHC/SDXC/USH-I memory card up to 2TB
- Built-in 5000mAh Polymer battery cell
- Built-in M.2 Port: Supports M.2 2230/2242/2260/2280 SSD,Read and write speed 500MB/s Max
- 4 LEDs for Power Status and Data Exchange
- Power on/off button: Short pressing to Show percentage of battery level ,Long pressing 5s will Forced Shutdown
- Housing:Plastic/zinc alloy
- Product Dimension: 106*68.6*18.5mm



BS017

- USB C Port: Support USB3.1 Gen2 and Gen1,Data rate up to 10G
- Built in M.2 connector.support NVMe DATA transmission.
- Support NTFS/FAT32/exFAT,Support Windows OS:7/8/8.1/10; MacOS:10.6\10.7-10.11;Andriod; iPadpro2018(Typec interface)
- Housing: Plastic/Aluminum
- Product Dimension: 105×40×13.6mm

DS01

- USB C Port: Support USB3.1 Gen2 and Gen1,Data rate up to 10G
- Built in M.2 connector.support NVMe DATA transmission.
- Support NTFS/FAT32/exFAT,Support Windows OS:7/8/8.1/10;MacOS:10.6\10.7-10.11;Andriod; iPadpro2018(Typec interface)
- Housing: Plastic/Zinc alloy
- Product Dimension: 102×45×14mm



DK-02

- USB C Cable*1: Supports DisplayPort™ 1.2lanes, Compliant with DisplayPort specification 1.2a.
- Adaptor*1: Support 96W
- DC IN*1: Connect to 96W charger
- USB C PD *1: PD output 18w
- HDMI *2: Support UHD 3840x2160@60HZ Backward compatible
- USB A 3.0 *2: Support up to 5Gbps data transmission. Downward compatible with USB 2.0;
- USB A 2.0*2: Most big data transmission 480Mbps;
- RJ45 *1: Integrated 10/100/1000M transceiver
- SD/TF *1: Support SDHC/SDXC/UHS-1
- 3.5mm Audio*1: Support 48K stereo audio output and microphone input
- Housing: Aluminum/Plastic;
- Product Dimension: 230*40.3*18mm



CH04

- USB C Cable*1: Connect to PC; DisplayPort(DP)input Supports DisplayPort™ 1,2,4lanes;
- HDMI*1:Support HDMI up to 3840 x 2160@60Hz or 4096x2160at 60Hz;
- Housing: Aluminum/Plastic
- Product Dimension: 62*34*14mm

CH08

- USB C Cable*1: Connect to PC; DisplayPort(DP)input Supports DisplayPort™ 1,2,4lanes;
- HDMI*1: Support UHD 7680*4320@60HZ Backward compatible
- Housing: Aluminum/Plastic
- Product Dimension: 62*34*14mm



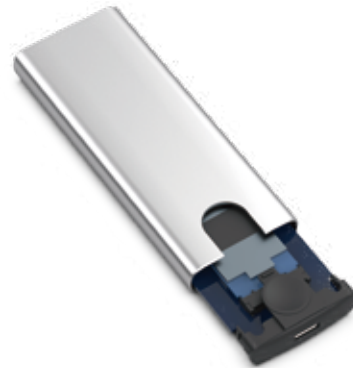


UM003

- USB-C Receptacle: Support USB 3.2 Gen2 and Gen 1, data transmission rate Up to 10Gbps
- Support M.2 interface SSD
- Built in M.2 connector, support SATA III DATA transmission
- Housing: Aluminum/ZN
- Size: 102*30*9mm

DS017

- USB C Port: Support USB3.1 Gen2 and Gen1, Data rate up to 10G
- Built in M.2 connector, support NVMe DATA transmission.
- Support NTFS/FAT32/exFAT, Support Windows OS: 7/8/8.1/10; MacOS: 10.6\10.7-10.11; Android; iPad Pro 2018 (Type-C interface)
- Housing: Plastic/Aluminum
- Product Dimension: 105*40*13.6mm



HB-02

- USB C male/Cable*1: Connect to PC, Support USB3.2 GEN1 (5Gbps data transmission)
- USB-A*4: USB3.2 GEN1, Most big data transmission 5Gbps
- Housing: Plastic
- Product Dimension: 106*30.5*11mm

HB-12

- USB C Cable*1: Connect to PC, Support USB3.1 (5Gbps data transmission)
- USB-A*2: USB3.2 GEN1, Most big data transmission 5Gbps
- USB-C*2: USB3.2 GEN1, Most big data transmission 5Gbps
- Housing: Plastic
- Product Dimension: 106*30.5*11mm



HB-10

- USB C Cable*1: Charging USB-C Laptop up to PD 100W; DisplayPort(DP)output Support DP1.2/1.4; Support USB3.2(5Gbps data transmission)
- USB C female*1: PD Input 100W
- USB3.0*2: Support up to 5Gbps data transmission. Downward compatible with USB2.0
- HDMI*1: Support UHD 3840x2160@60HZ Backward compatible
- SD/TF *1: Support SDHC/SDXC/UHS-1
- RJ45*1: Integrated10/100/1000M transceiver
- Housing: Plastic
- Product Dimension: 167*75.13*32.55mm



HS010

- USB C Cable*1: Connect to PC ,support USB4.0;
- USB C female*1: PD Input 100W
- RJ45*1: Integrated10/100/1000M transceiver
- HDMI*1: Support HDMI up to UHD 3840x2160 at 120Hz. or 7680x4320 at 60Hz.
- USBA 3.2Gen2*2: Support up to 10Gbps data transmission. Downward compatible with USB2.0
- USBC 3.2Gen2*1: Support up to 10Gbps data transmission. Downward compatible with USB2.0
- Housing: Aluminum/Plastic
- Product Dimension: 116*46*14mm

HB-09-N

- USB C Cable*1: Charging USB-C Laptop up to PD 100W; DisplayPort(DP)output Support DP1.2/1.4; Support USB3.2(5Gbps data transmission)
- USB C female*1: PD Input 100W
- USB-A 3.2 Gen1*2: Support up to 5Gbps data transmission. Downward compatible with USB2.0
- TF *1:Support SDHC/SDXC/UHS-1
- HDMI*1: Support UHD 3840x2160@60HZ Backward compatible
- Housing: Plastic
- Product Dimension: 81.37*122*33.7mm



M2

- USB C Cable*1: Charging USB-C Laptop up to PD 100W; playPort(DP)output Support DP1.2/1.4; Support USB3.2(10Gbps data transmission)
- USB C female*1: PD Input 100W
- Support M.2 interface SSD,Built in connector.support PCIE(NVME) DATA transmission
- USB 3.2Gen2*2: Support up to 10Gbps data transmission. Downward compatible with USB2.0
- HDMI *1: Support HDMI up to 1080p at 60Hz or UHD 3840x2160 at 60Hz.
- RJ45*1: Integrated 10/100/1000M transceiver;
- Housing: Aluminum/Plastic;
- Product Dimension: 136*46*18mm



M3

- USB C Cable*1: Charging USB-C Laptop up to PD 100W; playPort(DP)output Support DP1.2/1.4; Support USB3.2(10Gbps data transmission)
- USB C female*1: PD Input 100W
- Support M.2 interface SSD,Built in connector.support PCIE(NVME) DATA transmission
- USB 3.2 GEN2 x2: Most big data transmission 10Gbps
- HDMI*1: Support UHD 3840x2160@60HZ Backward compatible
- RJ45*1: Integrated 10/100/1000M transceiver
- Housing: Aluminum/Plastic
- Product Dimension: 136*46*18mm



UC018

- USB C Cable*1: Supports DisplayPort™ 2lanes, Compliant with DisplayPort specification 1.4a.
- TYPE-C female x 1: (Power Delivery - PD) Compliant to USB Power Delivery Specification Revision 3.0 (support 5V/9V/12V/15V/20V, charging max power 100W)。
- HDMI *2: connect to Monitor, TV or projector. Support HDMI up to 4K60HZ
- USB A 3.0 *2: Support up to 5Gbps data transmission. Downward compatible with USB 2.0;
- USB A 2.0 *1: USB 2.0 Most big data transmission 480Mbps;
- USB C 3.0 *1: Support up to 5Gbps data transmission. Downward compatible with USB 2.0
- RJ45 *1: Integrated 10/100/1000M transceiver
- SD/TF *1: Support SDHC/SDXC/UHS-1
- 3.5mm Audio *1: Support for 48k stereo output and mic input
- Housing: Aluminum/Plastic;
- Product Dimension: 116×46×14mm



Angle2.5

- Micro USB3.0 Port: Support USB3.1 Gen1, Data rate up to 5G
- Built in SATA connector. Support SATA3 DATA transmission, Support Maximum 6G
- Support NTFS/FAT32, Support Windows OS: 7/8/8.1/10; Mac OS: 10.11+
- Housing: Plastic
- Product Dimension: 127×78×7.3mm

MC35

- Micro USB3.0 Port: Support USB3.1 Gen1, Data rate up to 5G
- DC JACK: Requires external power supply 12V/2A
- Switch: Power on/off
- Built in SATA connector
- Support NTFS/FAT32, Support Windows OS: 7/8/8.1/10; Mac OS: 10.11+
- Housing: Plastic
- Product Dimension: 186×117×34.5mm



M4

- USB C Cable*1: Connect to PC , support USB4.0;
- USB C female*1: PD Input 100W;
- USBC 3.2Gen2*2: Support up to 10Gbps data transmission. Downward compatible with USB2.0;
- USBA 2.0*1:Most big data transmission 480Mbps;
- USBC *1: DisplayPort(DP), Compliant with DisplayPort specification1.4.Supports, Support up to 10Gbps data transmission.
- HDMI *1: Support HDMI up to 1080p at 60Hz or UHD 3840x2160 at 60Hz.
- Housing:Aluminum/Plastic;
- Product Dimension: 126*46*16mm



UC017

- USB C Cable*1: Supports DisplayPortTM , 1,2lanes,Compliant with DisplayPort specification1.2a.
- TYPEC female x 1: PD Input 100W
- HDMI *1: Support HDMI up to 1080p at 60Hz or UHD 3840x2160 at 30Hz.
- USB A 3.0 *3: Support up to 5Gbps data transmission. Downward compatible with USB2.0;
- SD/TF2.0 *1: Support SDHC/SDXC. They can't be used at the same time.
- Housing: Aluminum/Plastic;
- Product Dimension: 100×40×12.5mm

UC020

- USB C Cable*1: Supports DisplayPortTM 1,2lanes, Compliant with DisplayPort specification1.4a.
- TYPEC female x 1: PD Input 100W
- HDMI *1: Support UHD 3840x2160@60HZ Downward compatible .
- USB A 3.0 *2: Support up to 5Gbps data transmission. Downward compatible with USB2.0;
- USB C 3.0 *1: Support up to 5Gbps data transmission. Downward compatible with USB2.0;
- 3.5mm Audio*1: Support for 48k stereo output and mic input
- SD/TF *1: Support SDHC/SDXC/UHS-1
- Housing: Aluminum/Plastic;
- Product Dimension: 105*40*10mm





BabyMonitor

- 5.5-inch LCD 1080P full HD display, clearer than market products.
- 900MHZ RF module transmission distance is more than 700 meters, double long distance comparing with market 300meters product, farther more stable.
- Support crying/movement detection alarm/video capture and playback on the Monitor.
- Optional Wi-Fi function for smart phone view/control by app. Physical button to turn off Wi-Fi for privacy protection.





PTC03

- 1080P pixel resolution, 120° field of view fixed lens; Pan the lens 300° horizontally or tilt it 96° vertically to get a clear view of the whole room.
- Crying/human detection and alarm; Optional temperature/humidity/event alarm; Two-way communication; TF card supports 7 days /24 hours event recording.
- Infrared night vision up to 10 m (33 ft); 2.4G Wi-Fi, USB 5V input, includes 2 screw holders.

